

City of Trees: Then, Now and in the Future

Chesapeake Bay Watershed Tree Canopy
Funding and Policy Roundtable

Earl Eutsler

DDOT Urban Forestry Division

Washington, DC



ENVIRONMENTAL
FINANCE CENTER



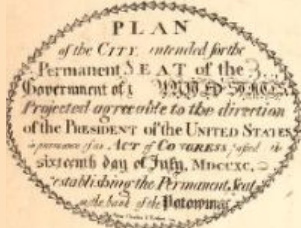
City of Trees: Then, Now and in the Future

- **Brief History of The City of Trees**
- Legislation & Funding
- Canopy Goals
- Achieving Equity
- Call to Action



ENVIRONMENTAL
FINANCE CENTER





OBSERVATIONS explanatory of the PLAN.

- I. The position for the different streets... II. Lines or divisions of street... III. Mark and such things...

Breadth of the Streets.

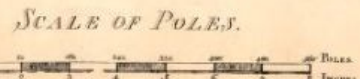
Every ground... 30'... 60'... 80'... 100'... 120'... 140'... 160'...

REFERENCES.

- A. THE... B. An... C. A... D. The... E. The...

The... The... The...

The... N.B. The...



Lat. Congress House... 38.55 N. Long. 0.0.

References.

- F. Grand... G. Public... H. Grand... I. The... K. The... L. The... M. The...

N.I.

Very... The... The... The... The...

Vertical text on the right side of the page, including references and signatures.





U.S. SUPREME COURT
U.S. CAPITOL
FIABS DC - 66B - 42



Alexander “Boss” Shepherd

- Governor of DC (1871 – 1873)
- Built modern infrastructure in pursuit of L’Enfant’s Vision
- Budgeted \$6 million for comprehensive public works
 - Sidewalks
 - Sewers
 - Paved Streets
 - Trees

Birth of the ***City of Trees***



Alexander “Boss” Shepherd

- Governor of DC (1871 – 1873)
- Built modern infrastructure in pursuit of L’Enfant’s Vision
- Budgeted \$6 million for works
 - Sidewalks
 - Sewers
 - Paved Streets
 - Trees

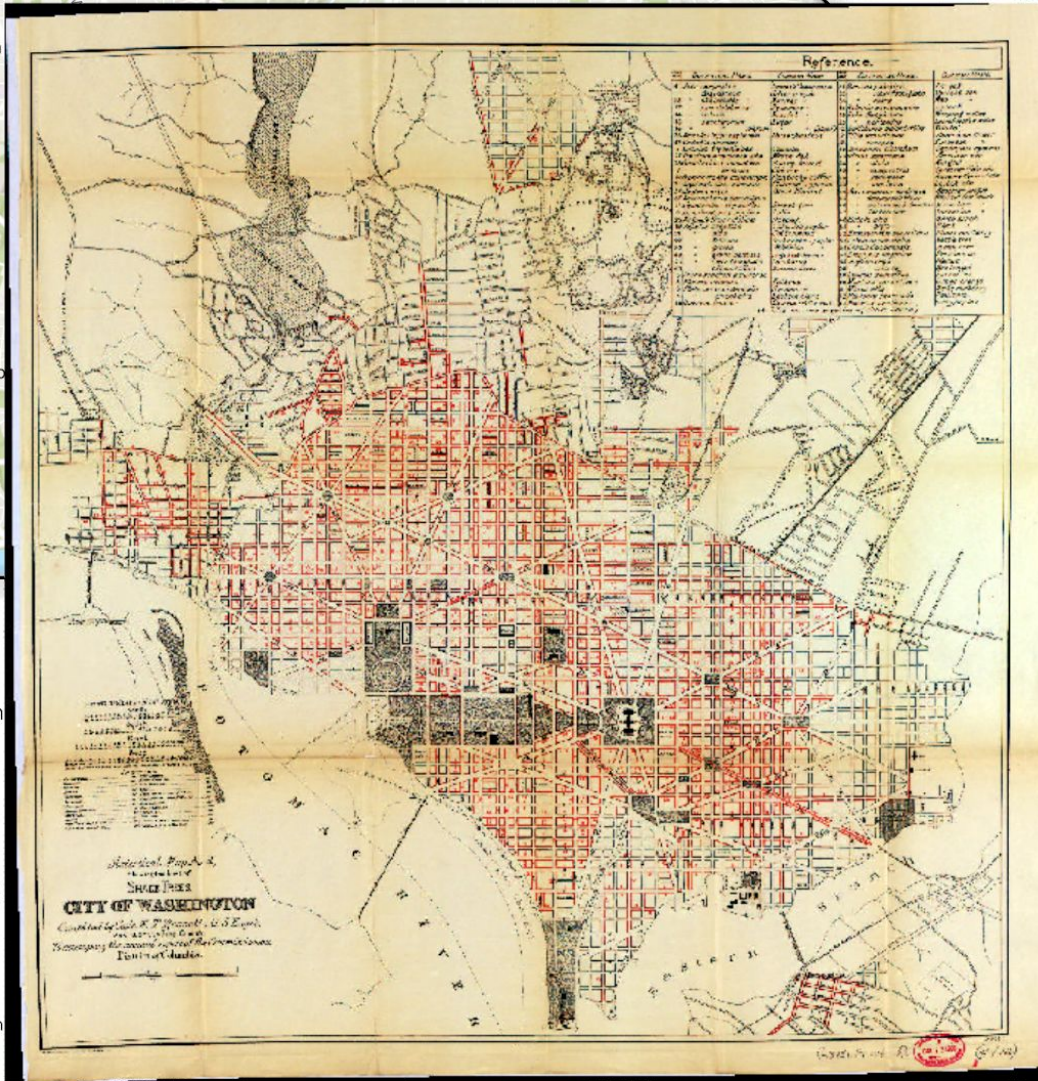
Spent \$18 Million

House on a Cliff Post-Street Grading



Lines of Shade Trees, 1891

This map, prepared in 1891, describes the shade tree species assigned to each city block.



McMillan Plan 1901







HAGS DC-618-45

Washington, DC in 1999-2002

*Mayor Working to Keep it Green -
Washington Post 2/1/1999*

- **Leadership of Mayor Anthony Williams**
- American Forests Report (30 m Resolution)
- Founding of Casey Trees
- DDOT Urban Forestry Created
- Legislation

Mayor Working To Keep It Green

Williams Pleads for More Trees

By STEPHEN C. FEHR
Washington Post Staff Writer

In a city with 45,000 hungry children, a growing homeless population and a school system that needs major improvements, why was the mayor of Washington standing under a tulip poplar yesterday talking about trees?

Mayor Anthony A. Williams posed that question himself in the chilly air swirling around Pierce Park in Northwest Washington's Adams-Morgan community. The answer, he said, is that trees are a symbol of how a city views itself. Trees matter.

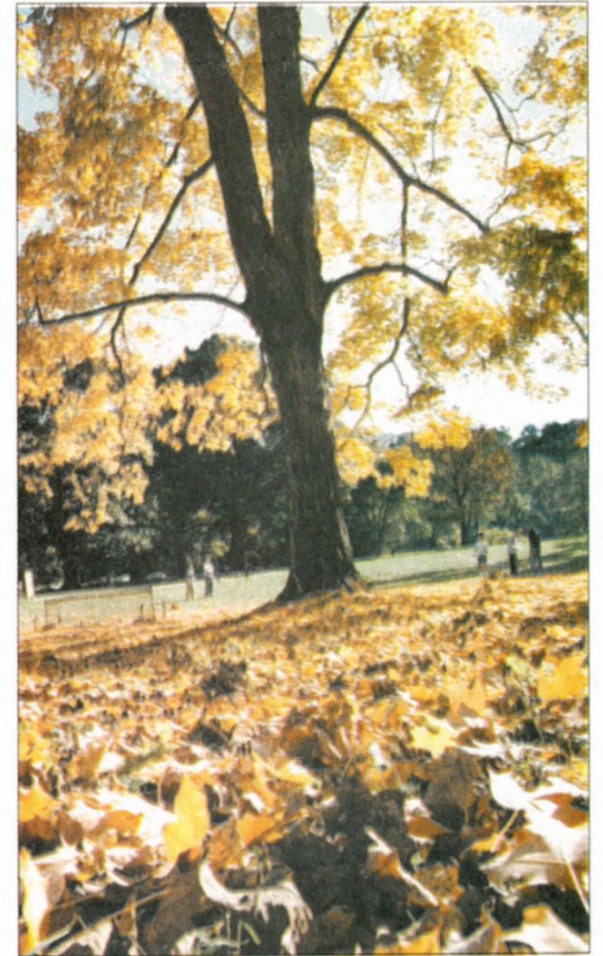
"If we can't take care of our trees, how are we going to take care of our schools? How are we going to take care of our roads?" Williams said at a news conference he held to call attention to the plight of the District's trees. "Trees are a metaphor of public space. That's what we're fighting for—vital, robust public spaces."

Dating to Thomas Jefferson's presidency, Washington has had a reputation as one of the greenest world capitals, eventually picking up the moniker "City of Trees." The D.C. government pioneered one of the most diversified street tree planting programs in the nation, "not only making the District's trees famous, but also enhancing the prestige of the District itself," according to a 1968 street trees study.

A recent report by American Forests, a nonprofit conservation group, documents the loss of trees in the District. Another report by the Committee of 100 on the Federal City asks Williams to set a goal of planting 30,000 trees over the next three years.

American Forests brought satellite images to the mayor's news conference that showed the dramatic change in the city's tree cover since 1973. The group said the number of acres of heavy tree cover has dropped 64 percent since then, as trees fell victim to disease, development and natural attrition—and weren't replaced. The steady decline was visible in photos that showed a spreading dark image replacing splotches of green where trees once grew.

See TREES, B4, Col. 1



BY FRANK JOHNSTON—THE WASHINGTON POST

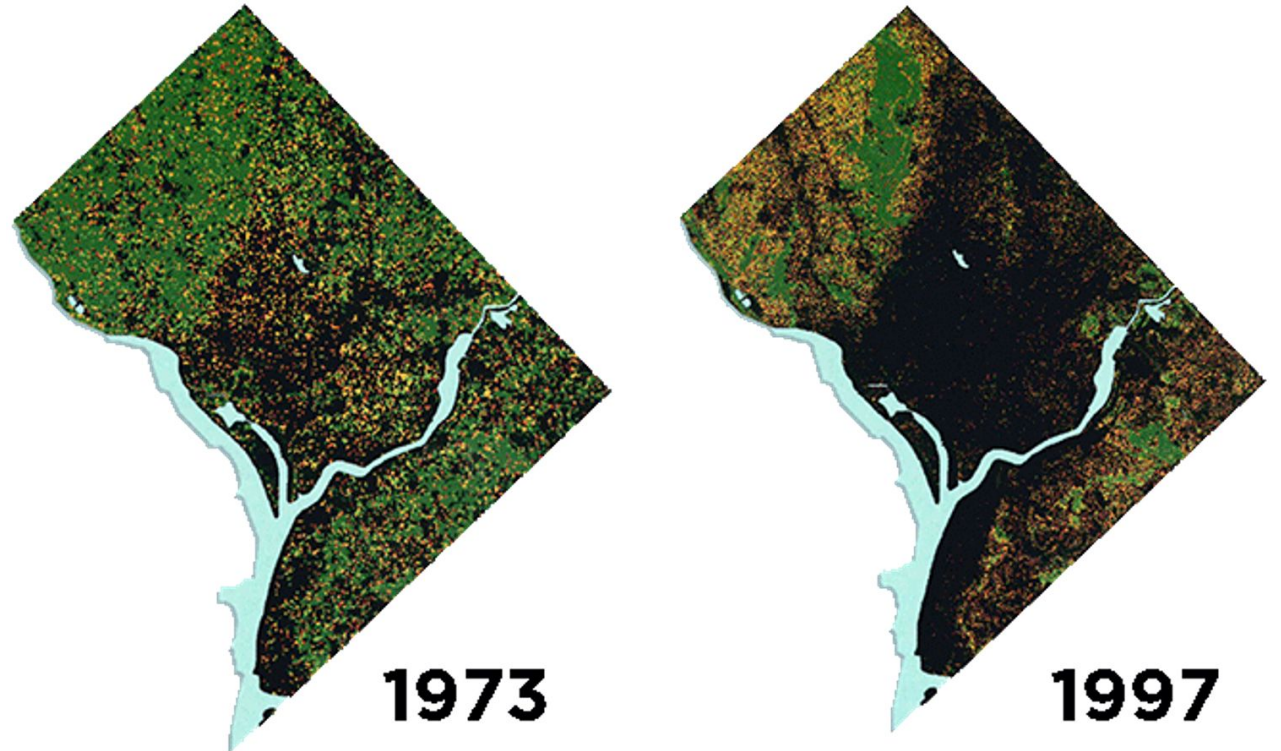
Green spaces such as this in Rock Creek Park are vital to the city, Mayor Anthony A. Williams said. He called trees "a metaphor of public space."

Washington, DC in 1999-2002

*Mayor Working to Keep it Green -
Washington Post 2/1/1999*

‘\$50 Million Photo’

- Leadership of Mayor Anthony Williams
- **American Forests Report (30 m Resolution)**
- Founding of Casey Trees
- DDOT Urban Forestry Created
- Legislation



Washington, DC in 1999-2002

*Mayor Working to Keep it Green -
Washington Post 2/1/1999*

- Leadership of Mayor Anthony Williams
- American Forests Report (30 m Resolution)
- **Founding of Casey Trees**
- DDOT Urban Forestry Created
- Legislation



Washington, DC in 1999-2002

*Mayor Working to Keep it Green -
Washington Post 2/1/1999*

- Leadership of Mayor Anthony Williams
- American Forests Report (30 m Resolution)
- Founding of Casey Trees
- **DDOT Urban Forestry Created**
- Legislation



Washington, DC in 1999-2002

*Mayor Working to Keep it Green -
Washington Post 2/1/1999*

- Leadership of Mayor Anthony Williams
- American Forests Report (30 m Resolution)
- Founding of Casey Trees
- DDOT Urban Forestry Created
- **Legislation**

**Urban Forest
Preservation Act
of 2002**

City of Trees: Then, Now and in the Future

- Brief History of The City of Trees
- **Legislation & Funding**
- Canopy Goals
- Achieving Equity
- Call to Action

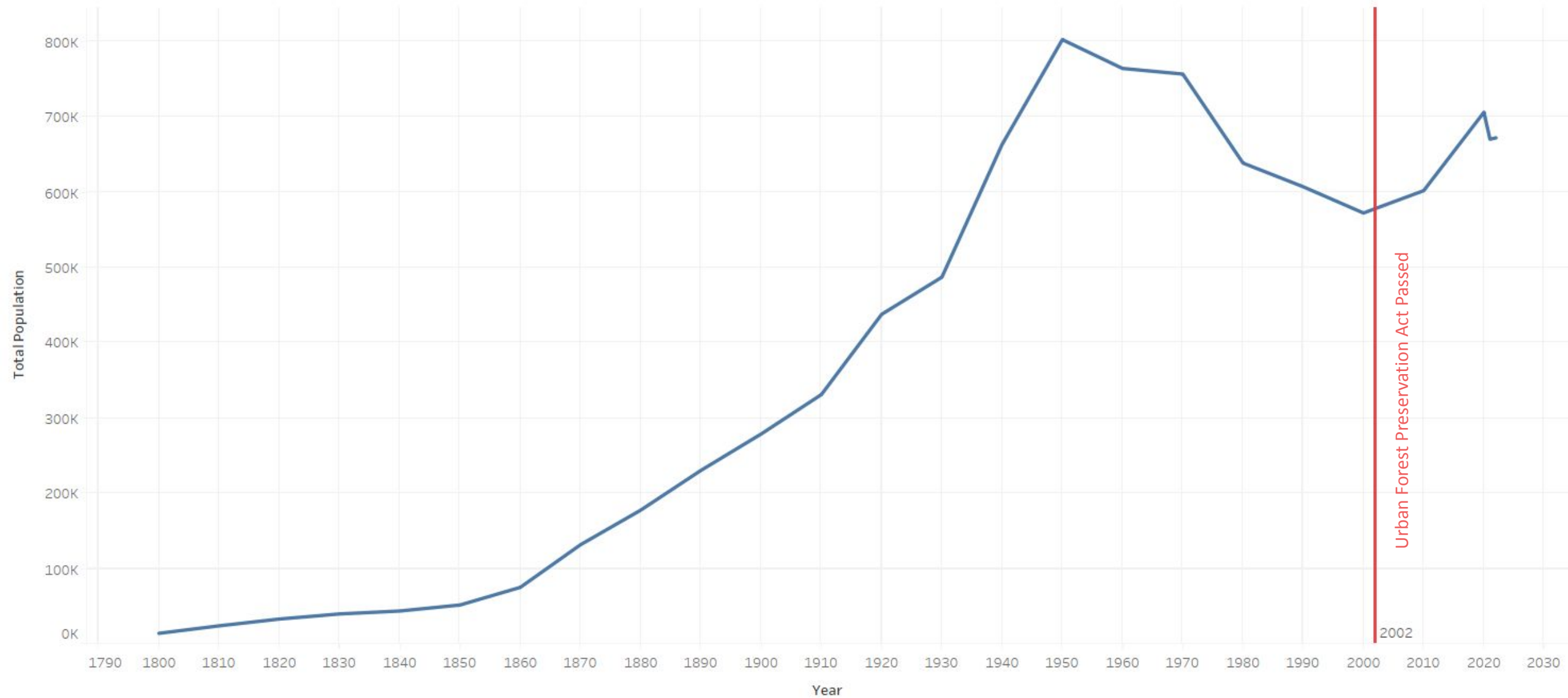


ENVIRONMENTAL
FINANCE CENTER



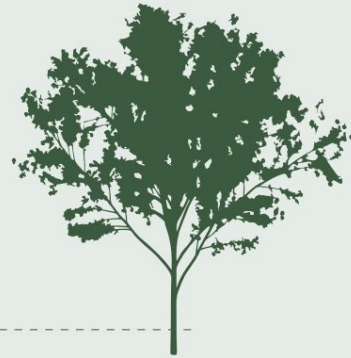
Urban Forest Preservation Act of 2002

UFPA Enacted



Urban Forest Preservation Act of 2002

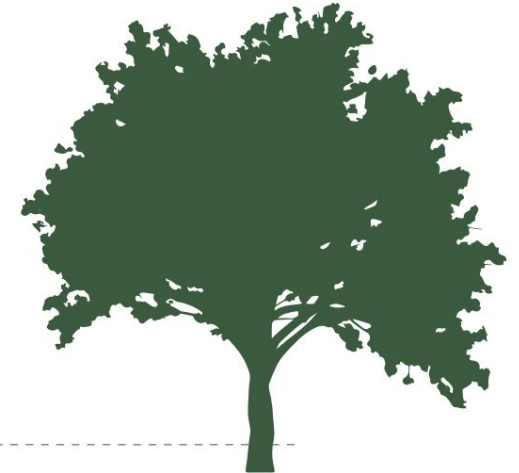
- Protects Special and Heritage Trees
- Tree Fund Established
- Hazardous Tree Mitigation Support



Special Trees

CIRCUMFERENCE = 44" - 99.9"

Special trees are trees with a circumference between 44 inches and 99.9 inches. Permits may be issued if the tree is Hazardous, if the tree is of a species that is appropriate for removal or if a permit is purchased. A permit costs \$55 for each inch of circumference. Removing a Special tree without a permit will result in a fine of \$300 per inch of circumference.



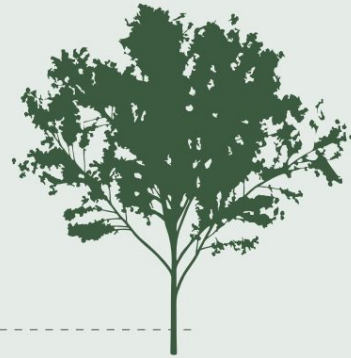
Heritage Trees

CIRCUMFERENCE = 100"+

Heritage trees may not be cut down unless they are determined to be hazardous or are a species that has been identified as appropriate for removal. Removing a Heritage Tree unlawfully will result in a fine of no less than \$300 per inch of circumference.

Urban Forest Preservation Act of 2002

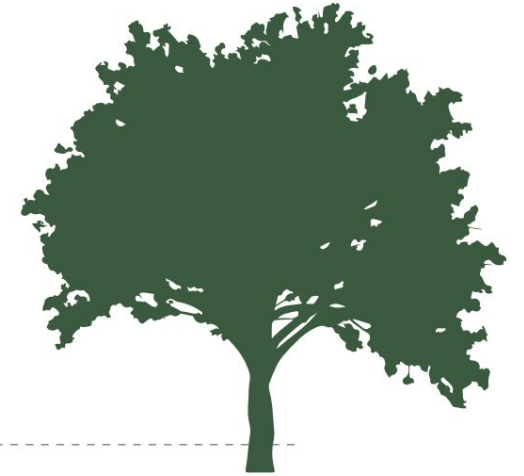
- Protects Special and Heritage Trees
- **Tree Fund Established**
- **Hazardous Tree Mitigation Support**



Special Trees

CIRCUMFERENCE = 44" - 99.9"

Special trees are trees with a circumference between 44 inches and 99.9 inches. Permits may be issued if the tree is Hazardous, if the tree is of a species that is appropriate for removal or if a permit is purchased. A permit costs \$55 for each inch of circumference. Removing a Special tree without a permit will result in a fine of \$300 per inch of circumference.



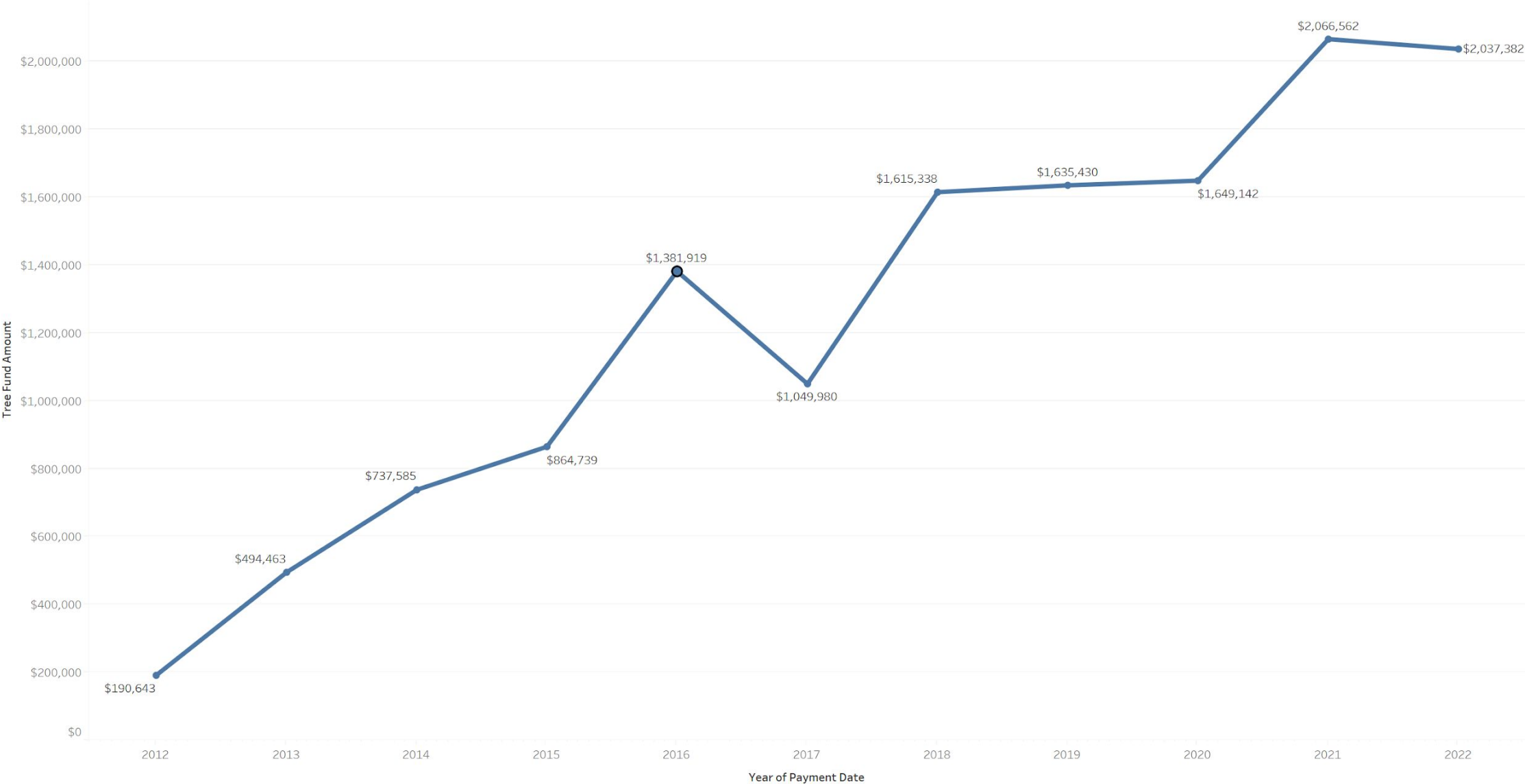
Heritage Trees

CIRCUMFERENCE = 100"+

Heritage trees may not be cut down unless they are determined to be hazardous or are a species that has been identified as appropriate for removal. Removing a Heritage Tree unlawfully will result in a fine of no less than \$300 per inch of circumference.

Tree Fund Contributions

Tree Fund Contributions



Tree Fund Partnerships

- **Department of Energy & Environment**
 - Riversmart Homes Planting
- **Casey Trees**
 - Tree Planting Programs
 - Community Planting
 - Tree Rebate
 - School and Park Planting
 - DC State Nursery
- **DDOT Urban Forestry**
 - Public Land Planting



Community Trees

FREE TO DC RESIDENTS

- ▶ Our trained professionals will work with you to add shade and create a greenspace for your community by your community.
- ▶ Any private landowners or communities with space to plant trees can take advantage of this program for no cost.



Residential Trees

FREE TO DC RESIDENTS

- ▶ **Totally free program**, easy to sign up and communicate with our trained experts.
- ▶ Trees **boost both our mental and physical health**.
- ▶ Trees can help **reduce heating and cooling costs** by shading buildings, acting as windbreaks.

BEGIN YOUR PLANTING PROCESS



School Trees

FREE TO DC RESIDENTS

- ▶ Work with our Education Team to bring environmental STEM learning and trees to your school.
- ▶ We will plant trees with the students and provide everything you need for a successful and educational day!

City of Trees: Then, Now and in the Future

- Brief History of The City of Trees
- Legislation & Funding
- **Canopy Goals**
- Achieving Equity
- Call to Action

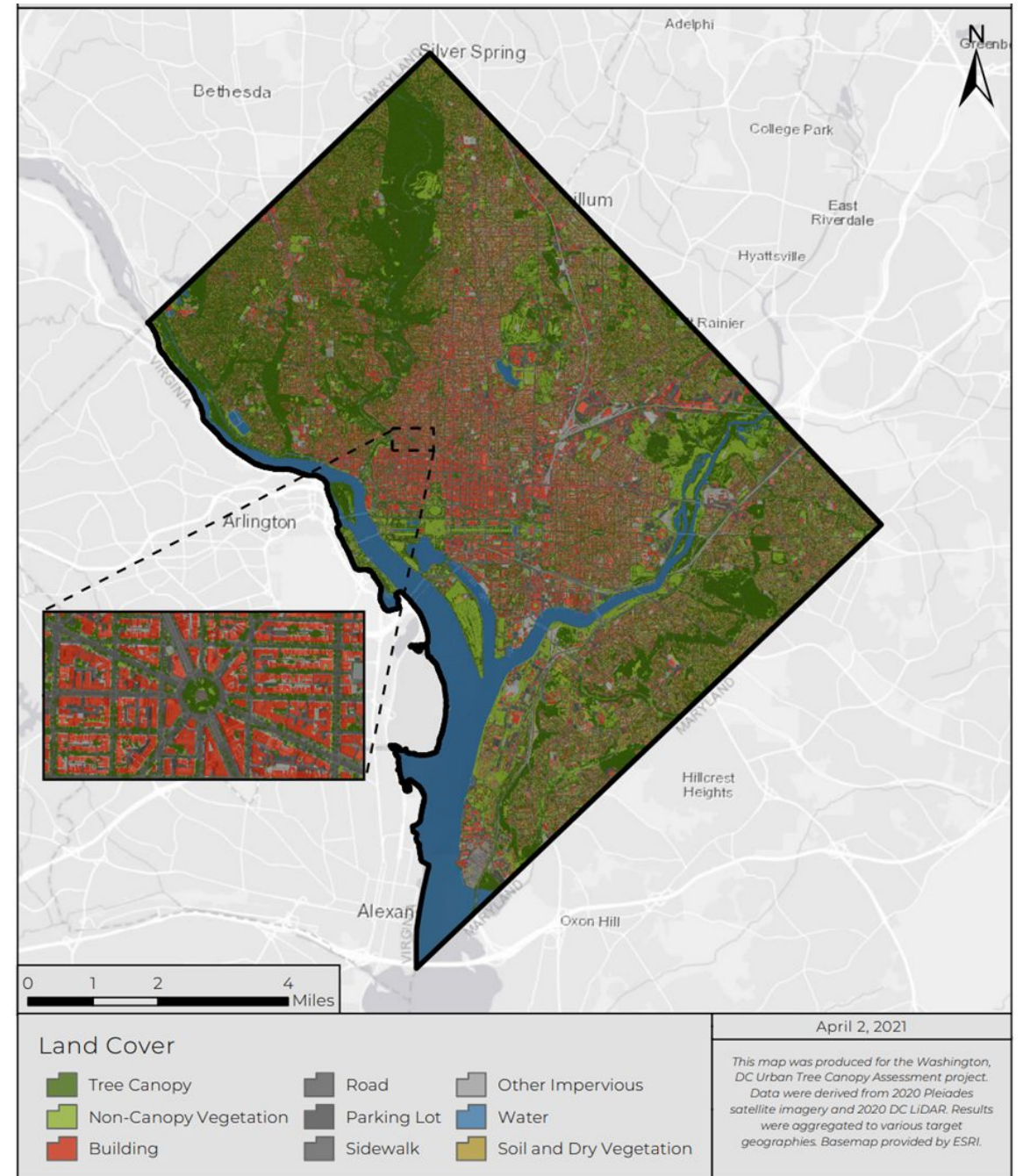


ENVIRONMENTAL
FINANCE CENTER



Urban Tree Canopy Goal

- 40% UTC by 2032
- Assessment of Existing Resource & Opportunities
- Monitoring Outcomes
- Measuring Progress



City of Trees: Then, Now and in the Future

- Brief History of The City of Trees
- Legislation & Funding
- Canopy Goals
- **Achieving Equity**
- Call to Action



ENVIRONMENTAL
FINANCE CENTER



Income Distribution

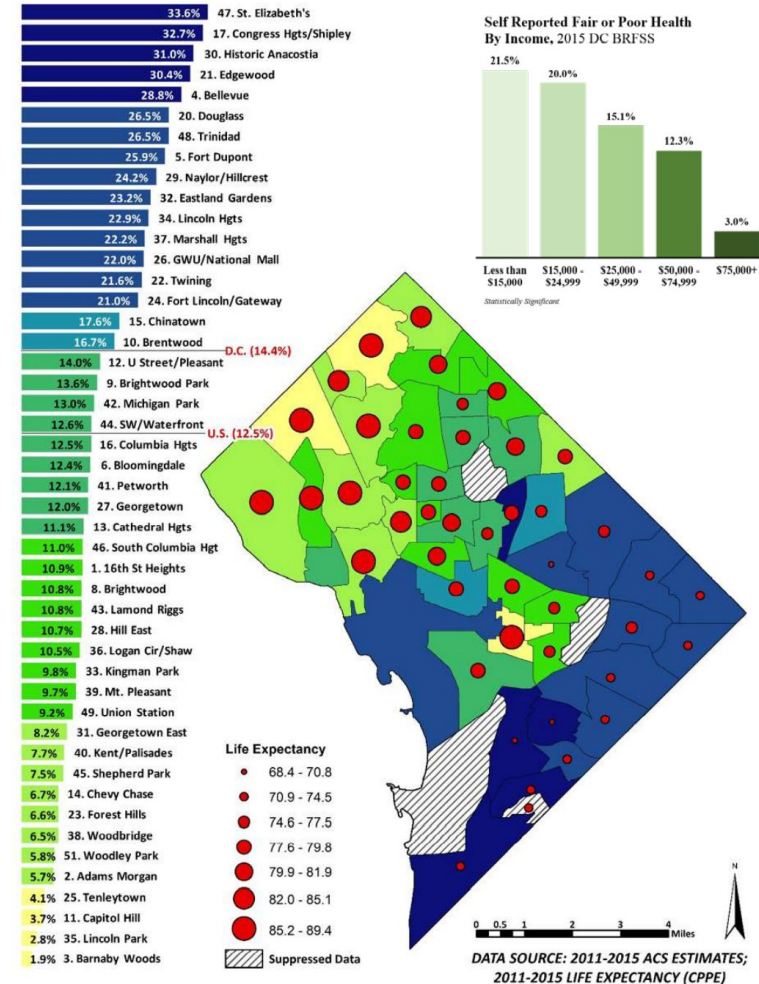
- Median Household Income: \$70,848 (\$53,889 Nat Avg)
- Poverty Rate: 18%
- 14.4% of District residents live on less than \$15,000 annually

SOURCE

INCOME by Neighborhood Group and Life Expectancy

Figure 5: Low Household Income (less than \$15,000/year)

PERCENTAGE OF HOUSEHOLDS EARNING LESS THAN \$15,000 (IN 2015 INFLATION-ADJUSTED DOLLARS)



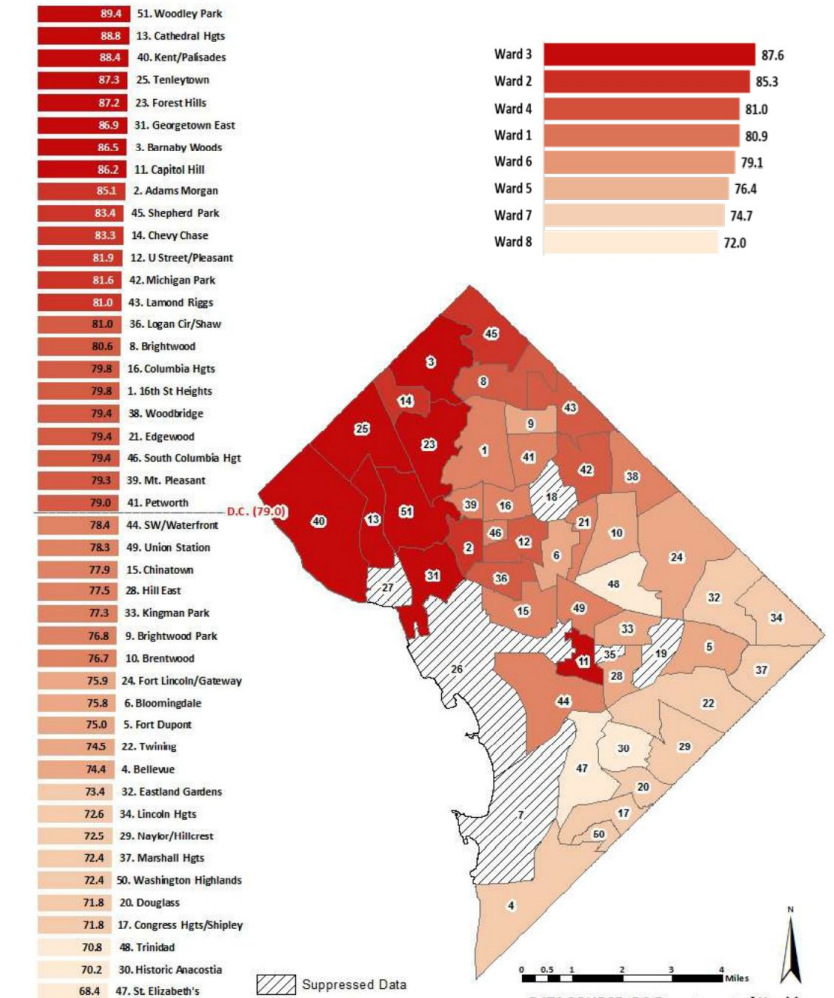
Life Expectancy

- As much as a **21 year difference** in life expectancy, based on where you live.
- Health is more than Healthcare.
- Health Inequities are not natural or inevitable.
- All policy can become health policy.

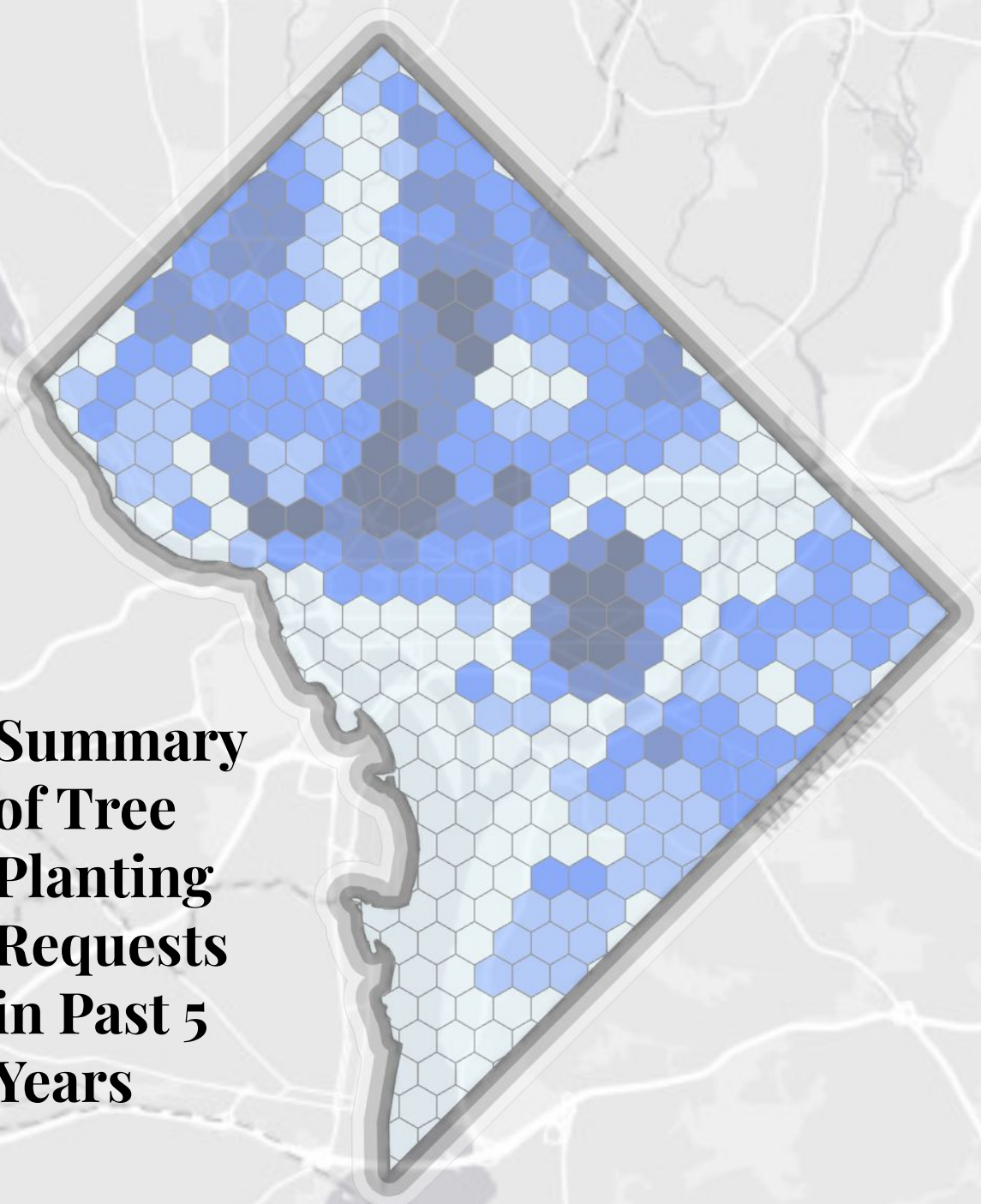
POPULATION HEALTH OUTCOMES by Neighborhood Group

Figure 2: Life Expectancy at Birth (2011-2015) Years

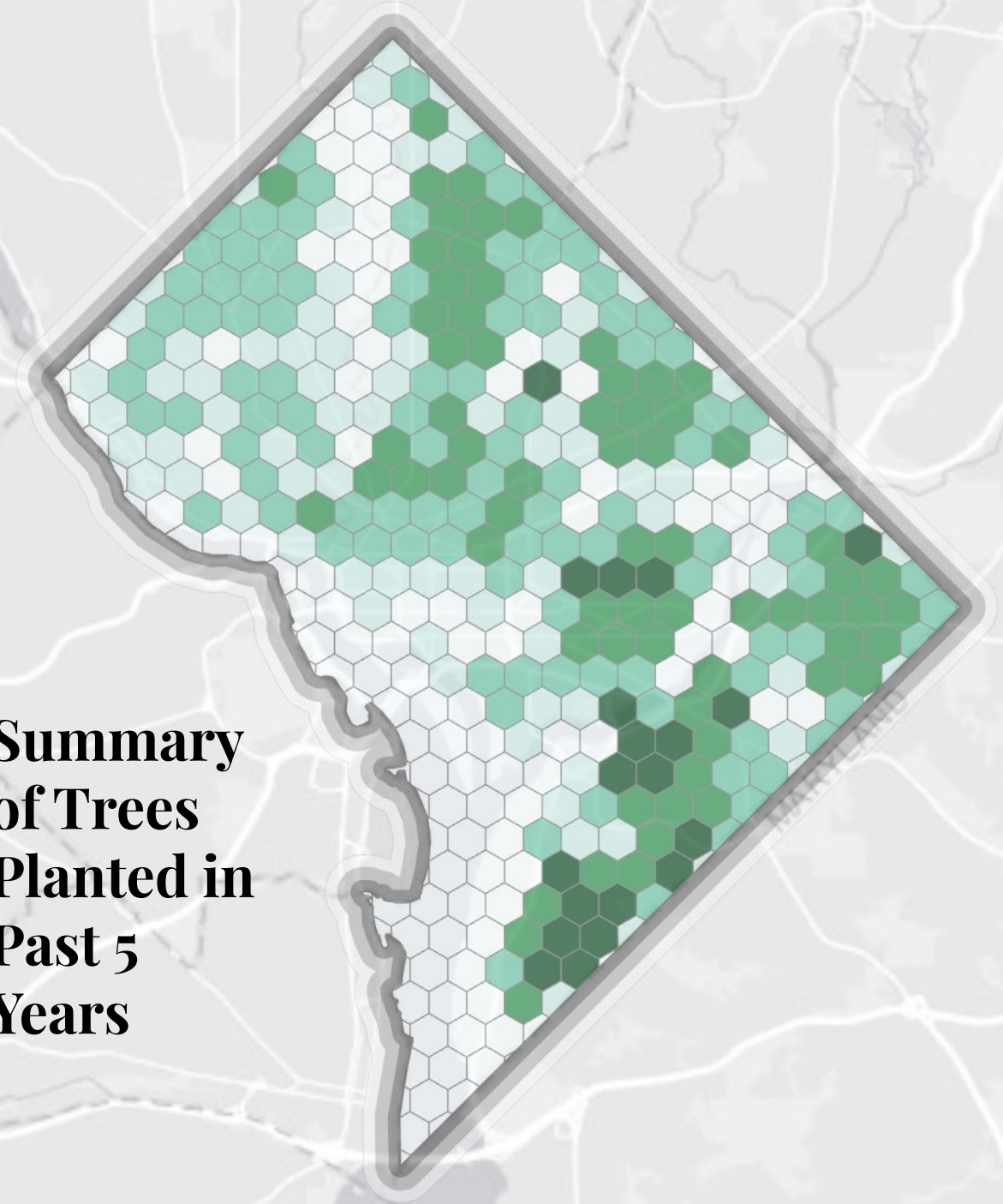
LIFE EXPECTANCY AT BIRTH (2011-2015)



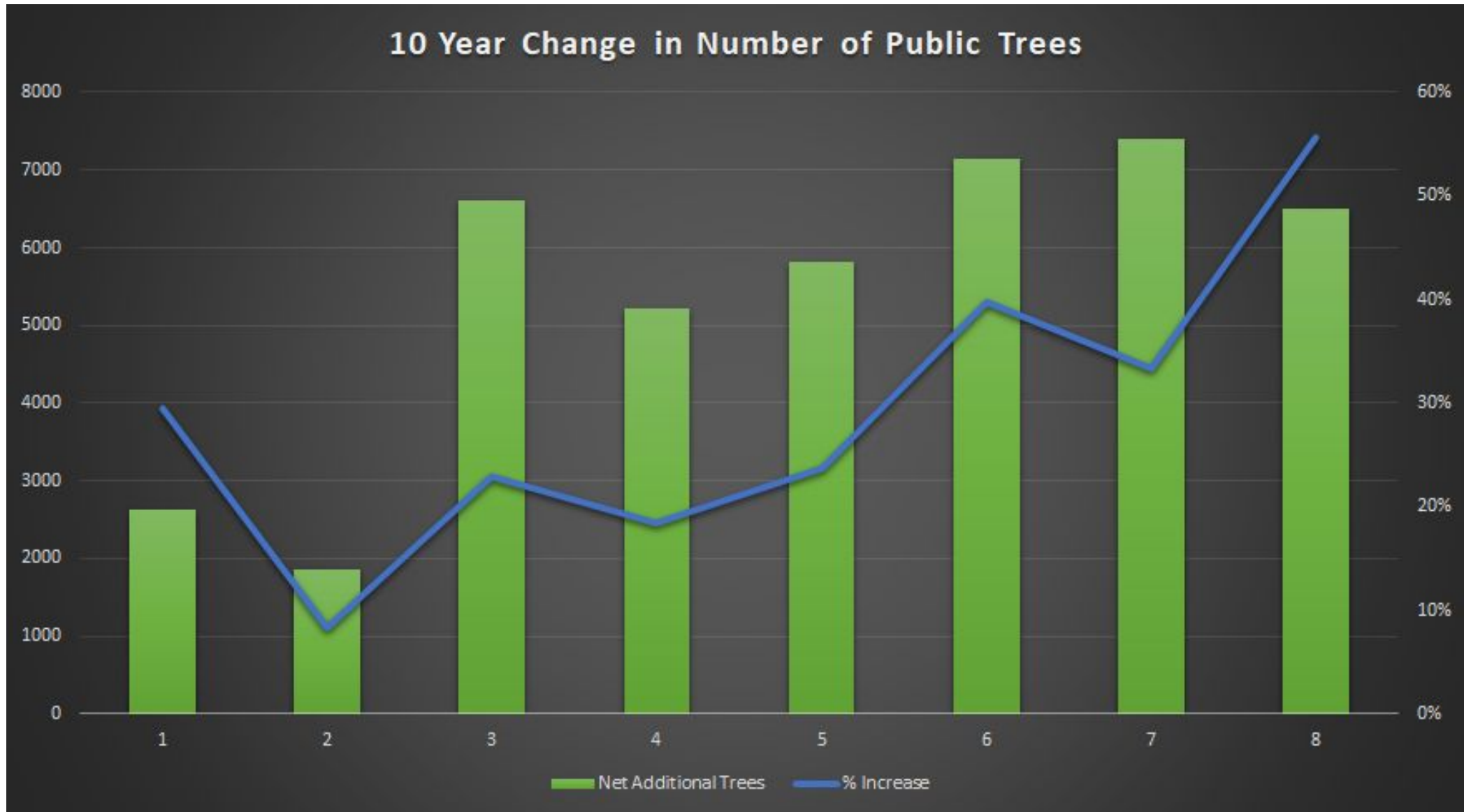
**Summary
of Tree
Planting
Requests
in Past 5
Years**



**Summary
of Trees
Planted in
Past 5
Years**



Substantial Increase in Total Trees in Past 10 Years



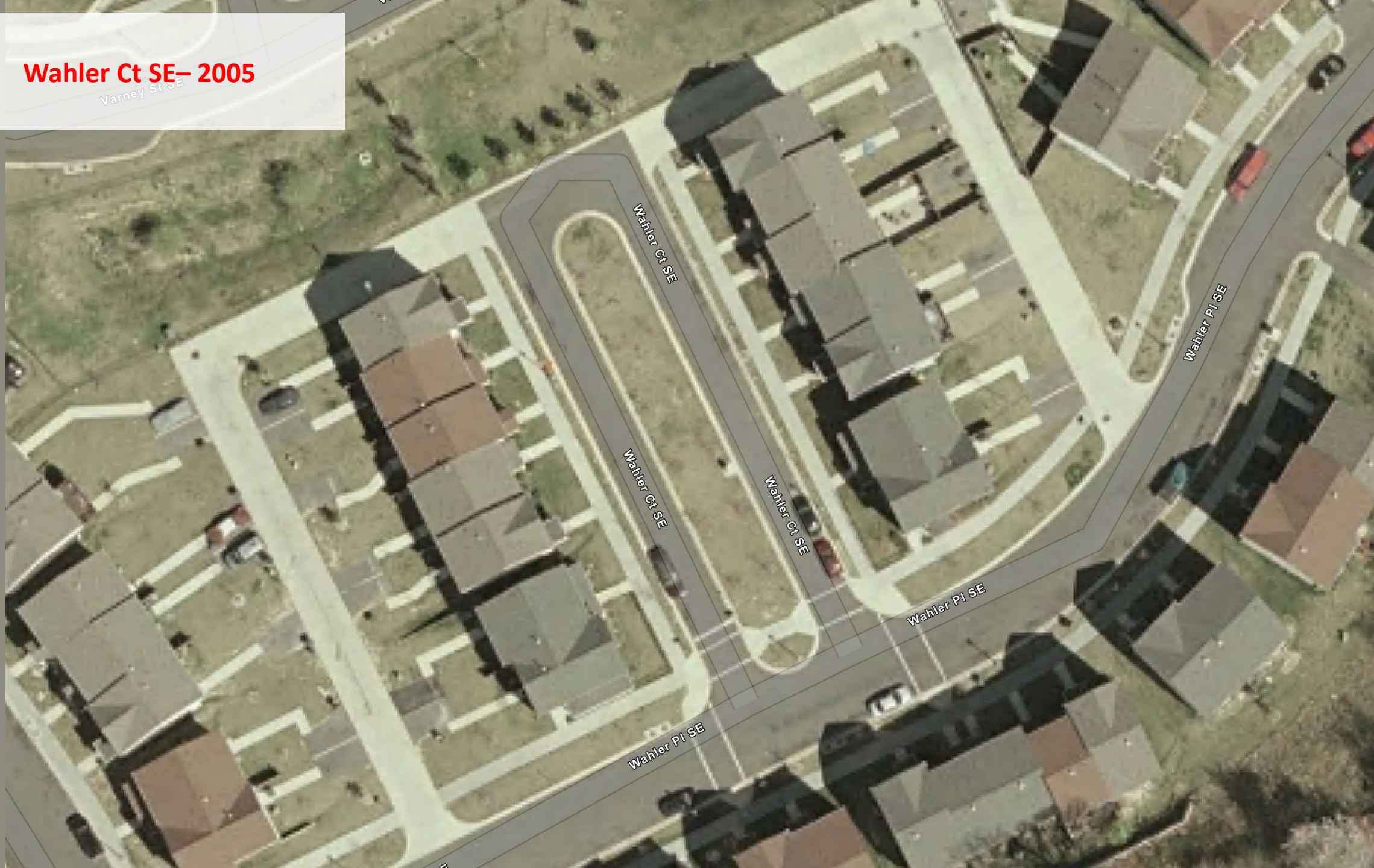
Land Cover Assessment Informs Equitable Resource Allocation

- Urban Tree Canopy
- Possible planting Area - Vegetation
- Possible Planting Area - Impervious
- Unsuitable for Planting - Impervious
- Unsuitable for Planting - Bare Earth
- Unsuitable for Planting - Other
- Water



Wahler Ct SE- 2005

Varney St SE



Wahler Ct SE

Wahler Ct SE

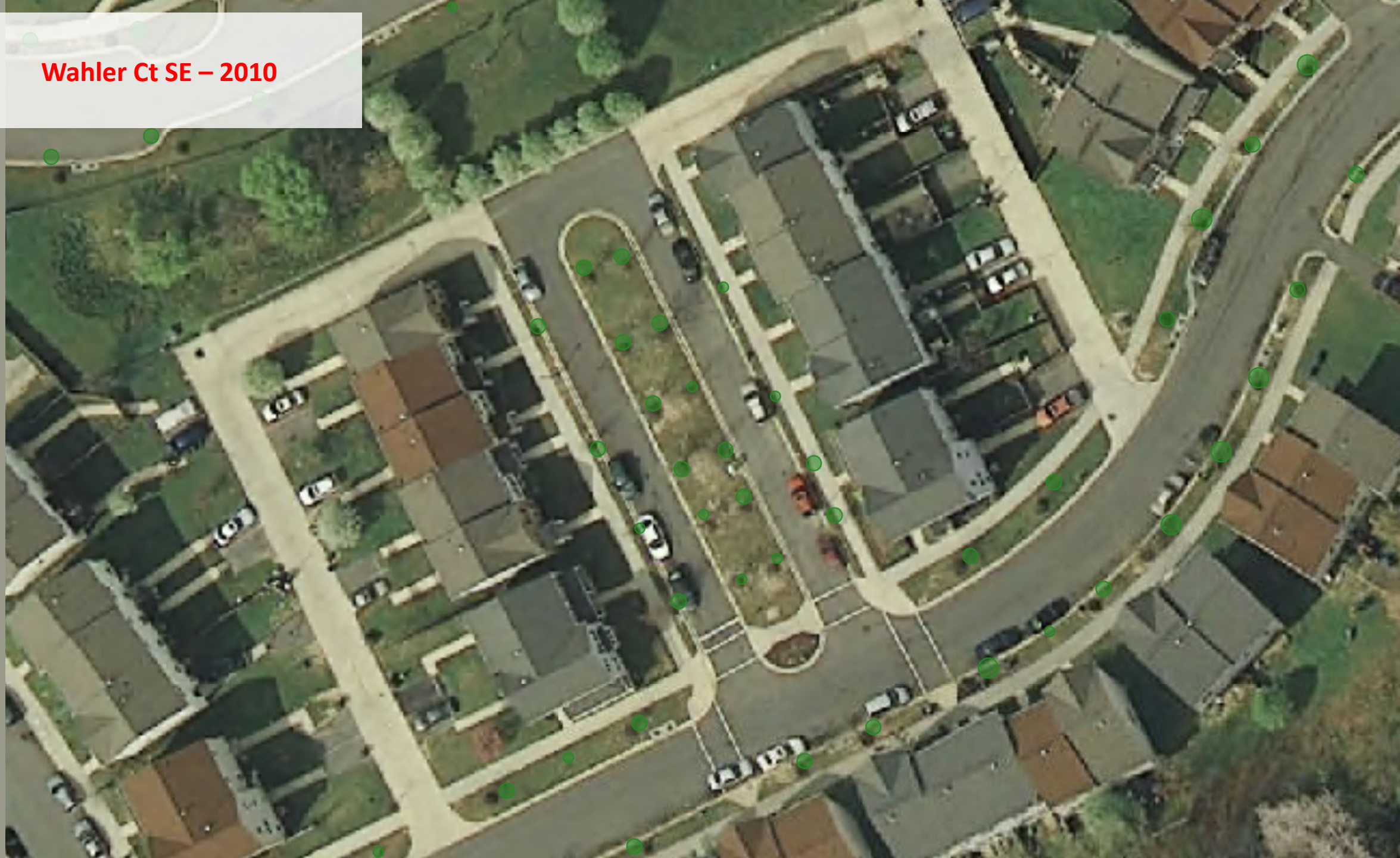
Wahler Ct SE

Wahler Pl SE

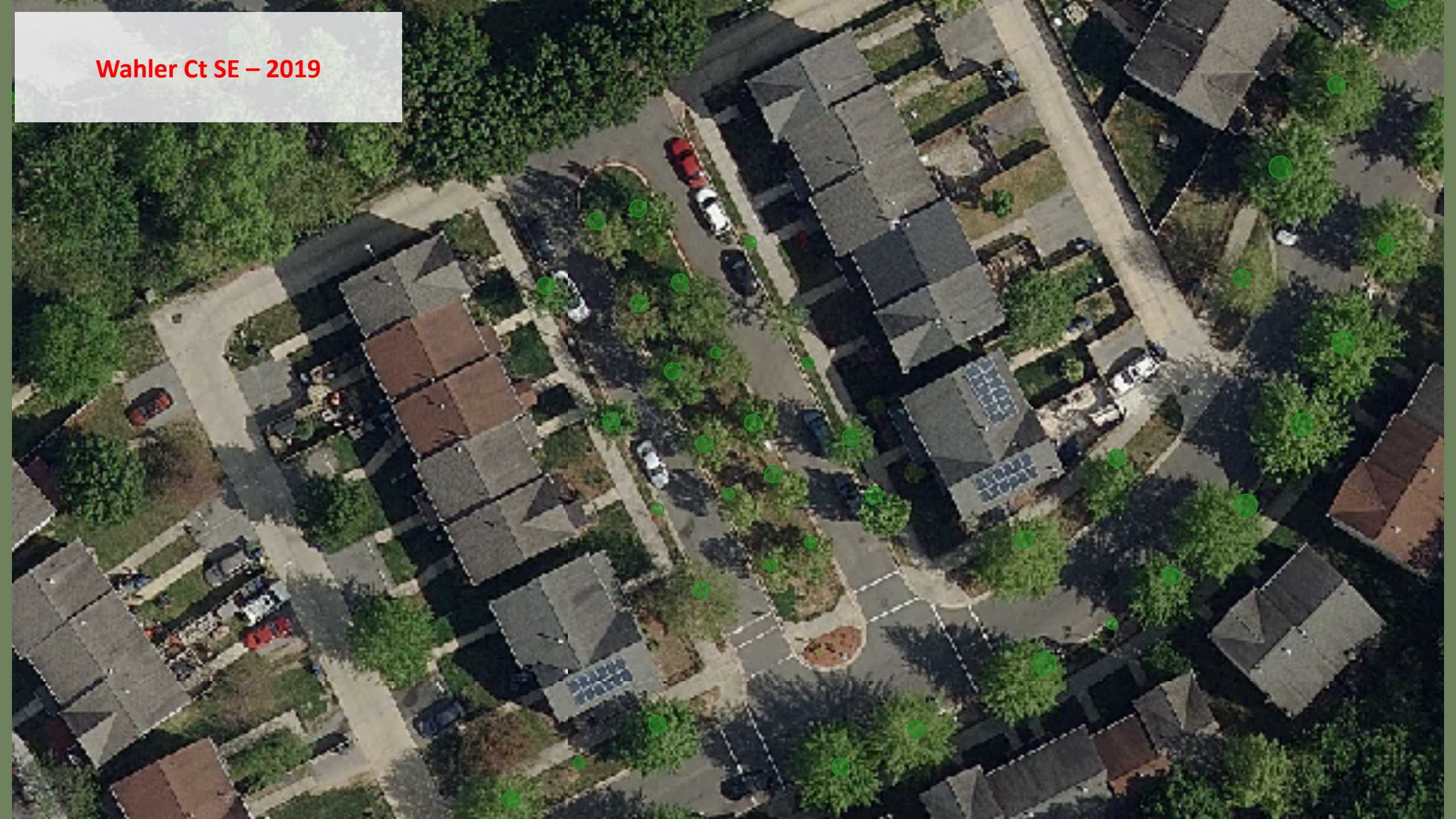
Wahler Pl SE

Wahler Pl SE

Wahler Ct SE – 2010



Wahler Ct SE – 2019



City of Trees: Then, Now and in the Future

- Brief History of The City of Trees
- Legislation & Funding
- Canopy Goals
- Achieving Equity
- **Call to Action**



ENVIRONMENTAL
FINANCE CENTER



CBP Land Use/Land Cover Data Project



ENVIRONMENTAL
FINANCE CENTER



City of Trees: Then, Now and in the Future

Thank you!

Earl.Eutsler@dc.gov

trees.dc.gov



ENVIRONMENTAL
FINANCE CENTER

