

DISTRICT DEPARTMENT OF TRANSPORTATION



Suitland Parkway Trail Rehabilitation

February 15, 2023

Welcome to our virtual public meeting!

To begin, we will review some basic controls to help you participate on this platform.

Please Note: This is an open meeting and as required by DC Code 2-578, this meeting is being recorded, and the recording will be made available to the public.

The video file (with both audio and video) will be shared on the project team's website and DDOT's YouTube Channel ([YouTube.com/DDOTVideos](https://www.youtube.com/DDOTVideos)) within 7 days after the meeting has ended.

This meeting is being live streamed to DDOT's Facebook page: [Facebook.com/DDOTDC](https://www.facebook.com/DDOTDC)
If you do not wish to have your voice recorded, please do not ask to speak. You may enter any questions or comments in the Q&A which we will review in the next few slides.

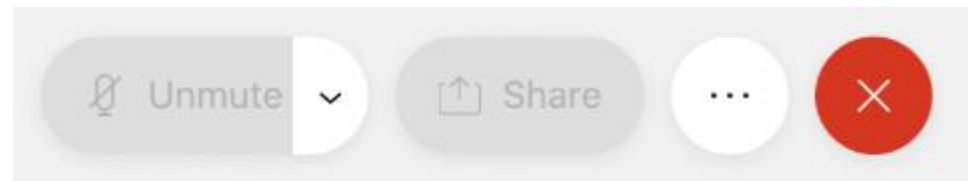
If you need technical support during this meeting, please call 202-253-9320

Using Webex – Audio & Video

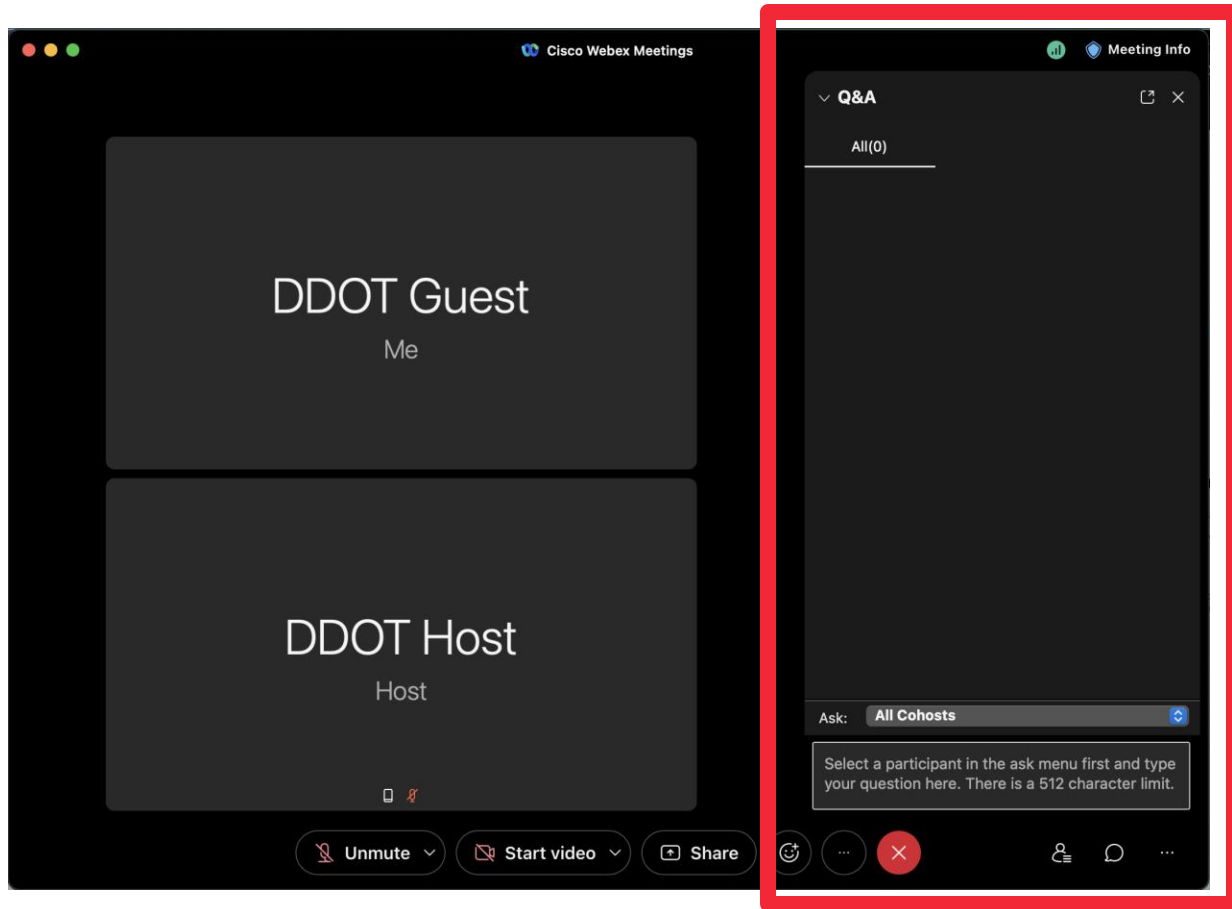
Audio/Muting

Everyone is on mute. You cannot unmute yourself. We can unmute you during the Q&A and Comment period. This helps ensure the meeting runs smoothly and there are no auditory disruptions during the presentation.

To request to speak, you will need to use the **Raise Hand** feature, which we will cover shortly.



Using Webex – Q&A



If you have a question or comment that you would like to speak up about, please **raise your hand**. This indicates to the Project Team that you would like to speak.

To virtually raise your hand:

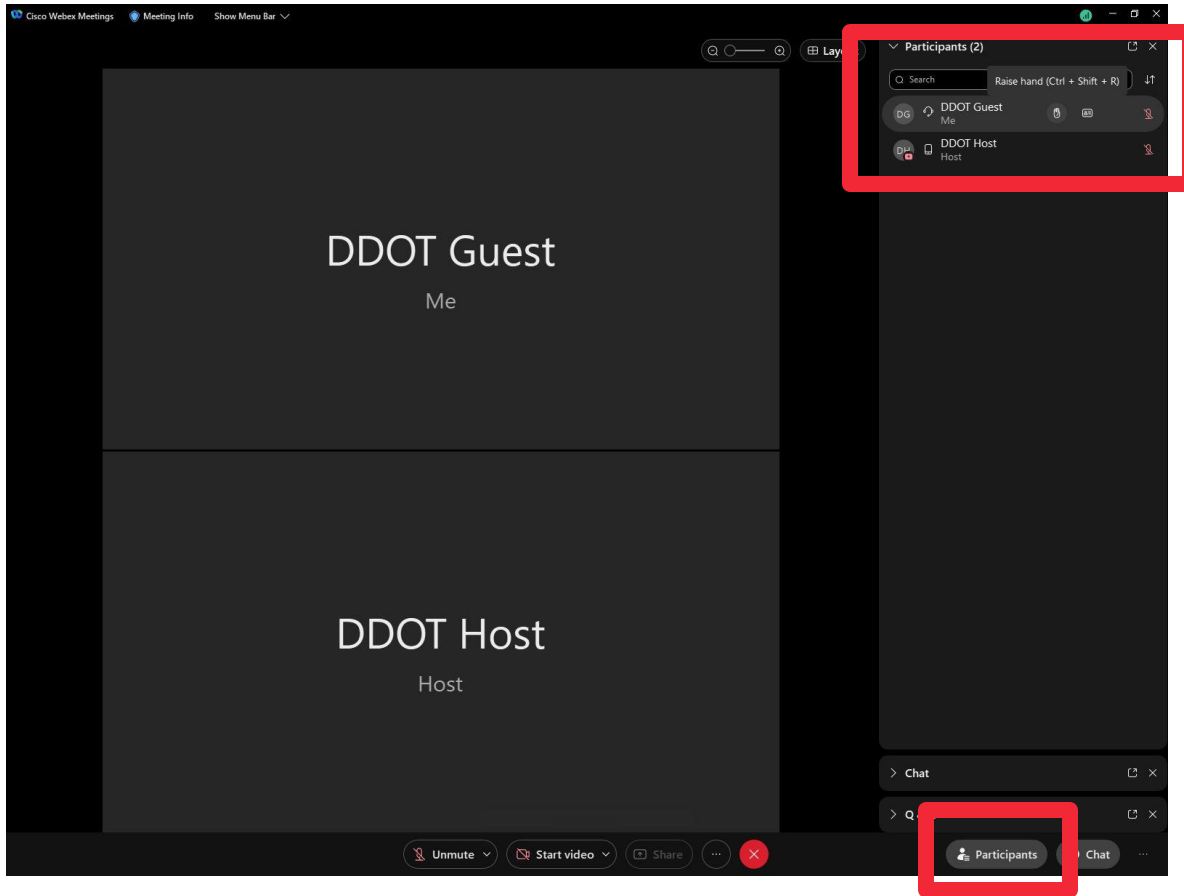
- Click the **Participants icon** on the bottom right of the Webex window.
- Hover your cursor next to your name and click the **Raise hand icon**

Alternatively, you may press the following keys on your keyboard: **Ctrl + Shift + R**

If you joined via browser or mobile app, click the 3 dot (...) icon and select Raise Hand.

If you dialed in by phone, **dial *3** to use the Raise Hand function.

Using Webex – Raise Hand



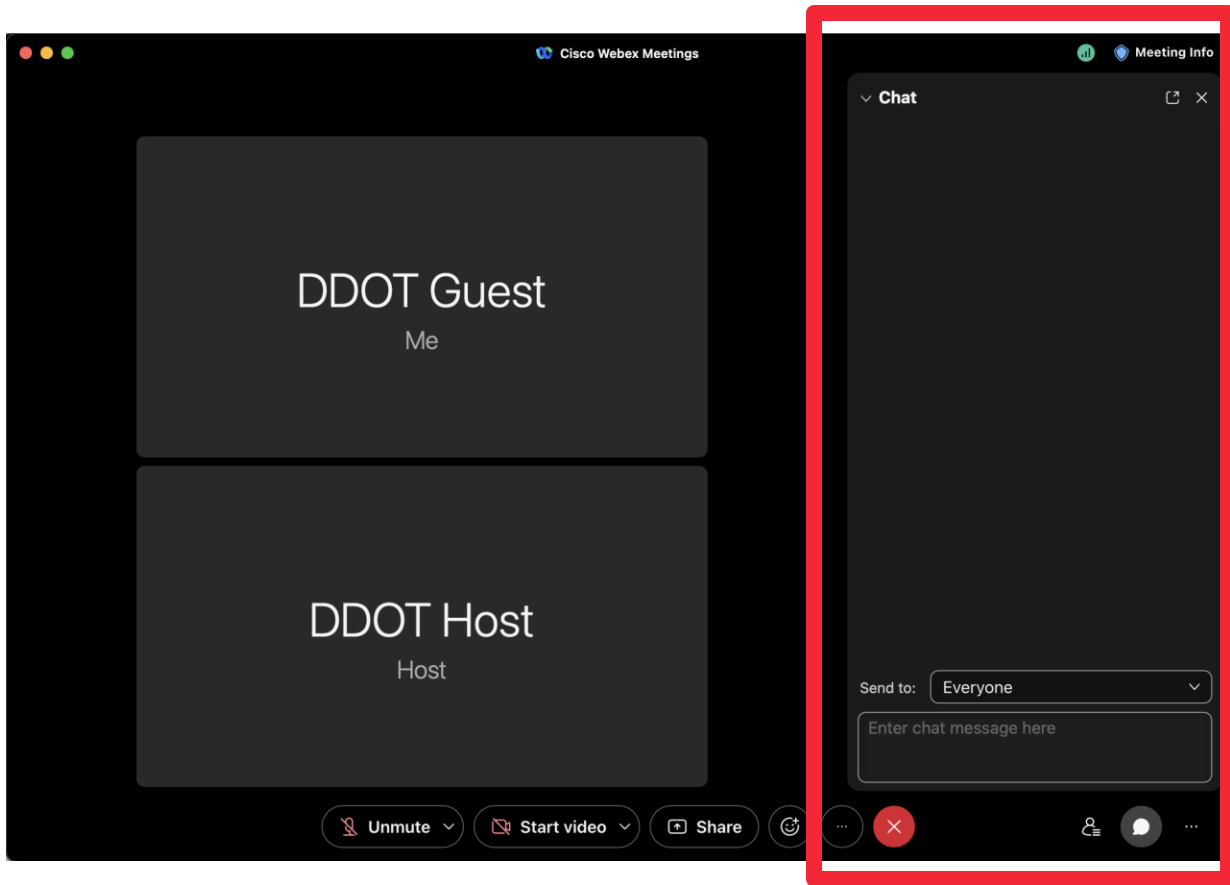
If you have a question during the presentation, send it via the Q&A feature.

To Send a Question:

- Click the “**three dot icon**” in the bottom right of the Webex window and select **Q&A**.
- A new panel or window will appear. In the “**Ask**” field, make sure **All CoHosts** is selected.
- Click the text box to type your question and press the Enter key to send it.

If you joined via Browser or Mobile App, click the 3 dot (...) icon and select the Question mark icon to access the Q&A to ask a question.

Using Webex – Chat



If you have a comment during the presentation, send it via the Chat feature.

To Send a Chat:

- Click “**Chat**” in the bottom right of the Webex window.
- A new panel or window will appear. In the “**Send to**” field, select **All Panelists**.
- Click the text box to type your comment and press the Enter key to send it.

Project Team

DDOT Project Manager – Michael Alvino, AICP

DDOT Deputy Project Manager – Stephanie Piperno

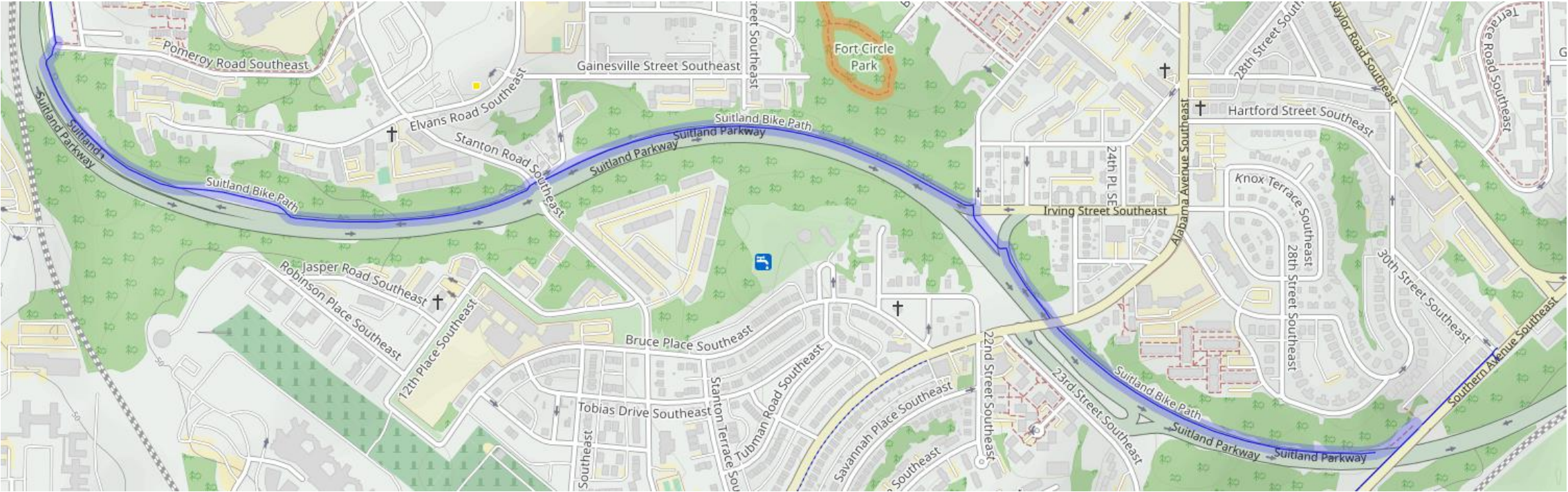
Design Consultant Project Manager – Jim Long, PE, VHB

Design Project Team –

- VHB – Design Consultant
- Wiles Mensch – Survey
- PSI – Lighting
- KGL – Public Engagement and Facilitation



Agenda



Source: DC Open Street Map, 2023 Suitland Parkway Cycle Map



Suitland Parkway and Trail

- 1) Do you use the Suitland Parkway Trail?
- 2) How often do you use the Suitland Parkway Trail?

Historic Suitland Parkway



Suitland Parkway May 11, 1962

- Early History of the Area
- Historic Designation
- History of Trail

Initial Construction Photos (1943)



Final Construction- "B" Road



Fine Grading for Concrete Paving

Initial Construction Photos (1943)



Clearing- "B" Road



Placing Fill Material-"B" Road



General view looking ahead along medium strip. "A" road on right graded

Initial Construction Photos (1943)

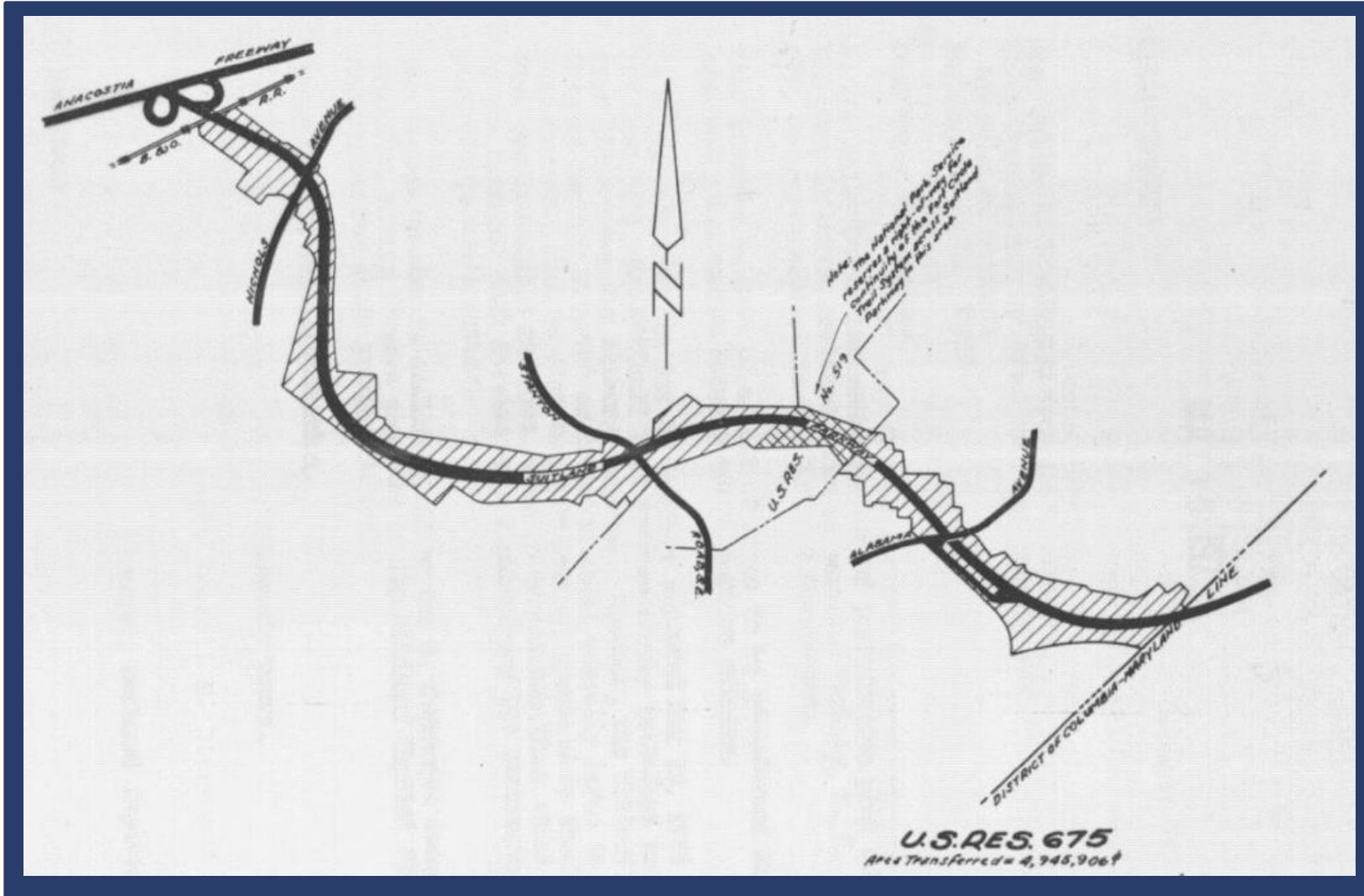


General view of west side of Alabama Avenue bridge during construction



General view of east side of completed structure

History of Suitland Parkway



- War Department Construction (1944)
- Property Transfer to NPS (1949)
- Property Transfer to DC (1973)

Plan View of Suitland Parkway Transfer of Jurisdiction

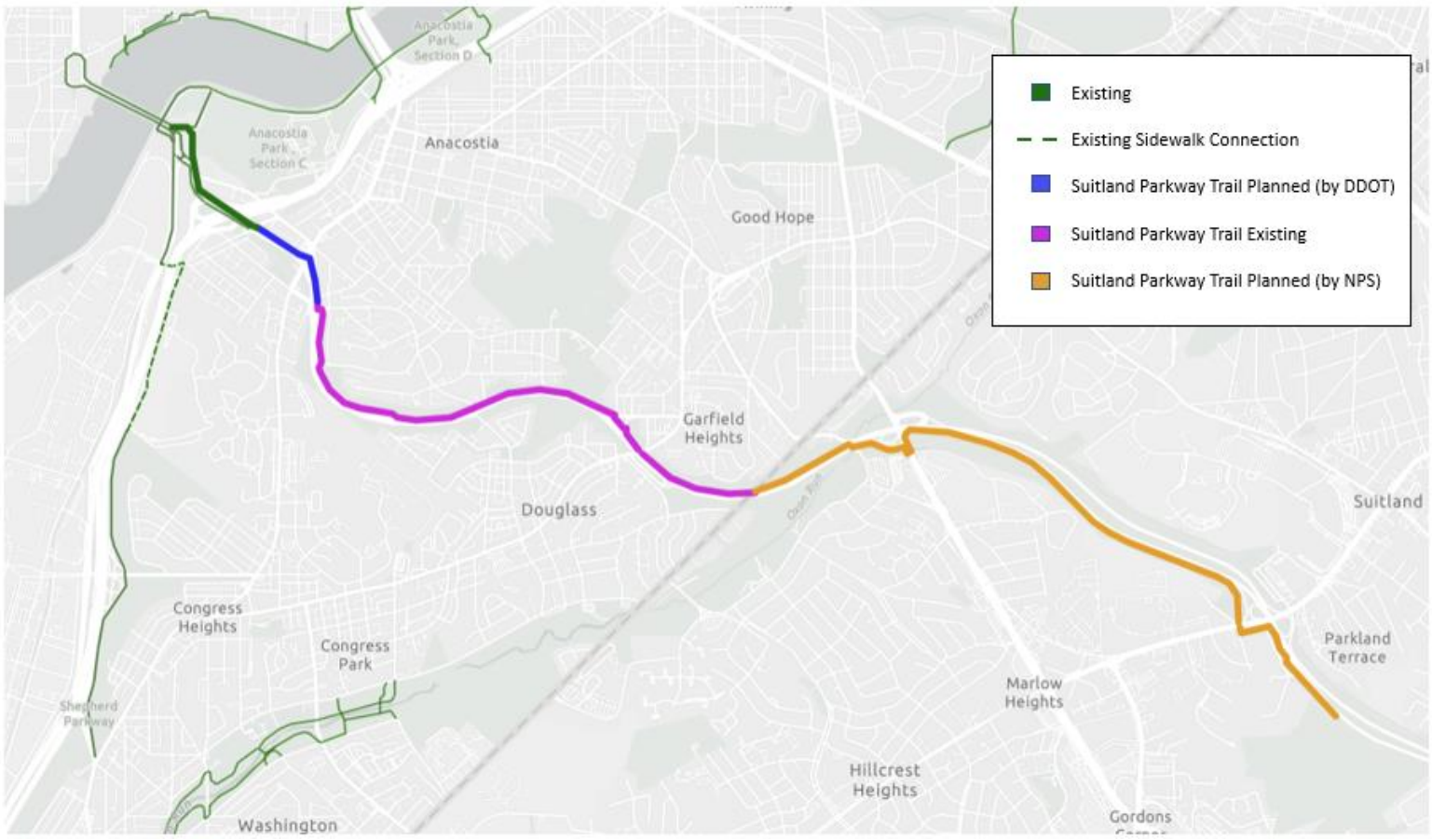
Suitland Parkway Network Vision



South Capitol St. / Fredrick Douglass Memorial Bridge



End of Suitland Trail at Maryland line



Project Boundaries

The project will rehabilitate the 1.7-mile trail from Sheridan Road SE & Pomeroy Road SE to the end of the Maryland line at Southern Avenue SE.



Current Trail Condition

- DDOT is responsible for trail maintenance:
 - Sweeping
 - Tree trimming/removal
 - Asphalt repair
- Please call 311 with any concerns regarding the trail
- You can also submit your concern online:
<https://311/dc/gov/citizen/home>



Suitland Parkway Trail Eastbound

Trail Design Considerations



Suitland Parkway at the Stanton Road Intersection

Trail User Experience

Roadway and Trail
Lighting

Tree Maintenance and
Preservation

Avoidance of Existing
Utility Lines

Roadway and Trail Lighting



Suitland Parkway and Trail at Orchard crossing

Roadway Lighting

Both sides of the roadway

Trail Lighting

Downlighting to minimize wildlife impacts

Tree Maintenance and Preservation



Crosswalk to trail through Orchard at Irving Street



Pomegranate Tree at the Orchard

Trail Design Consideration: Topography Challenges



Suitland Trail looking towards Elvans Rd

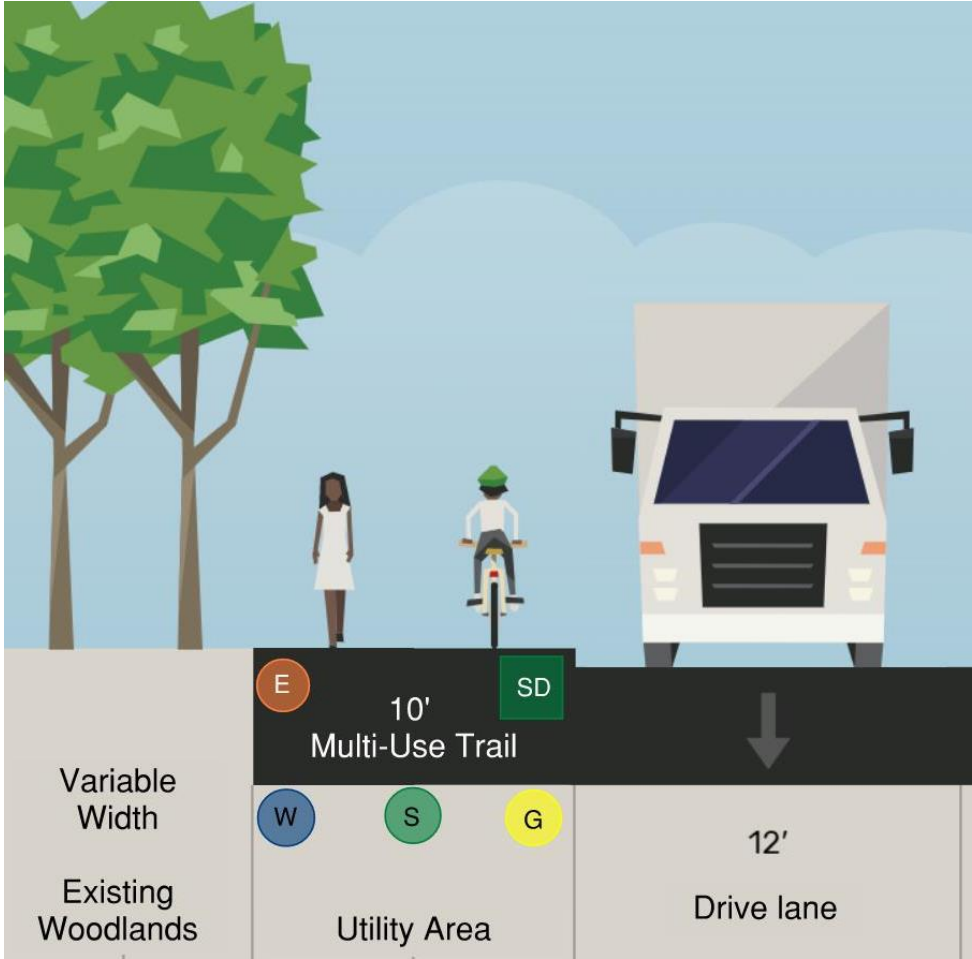


End of 18th St looking towards Suitland Pkwy

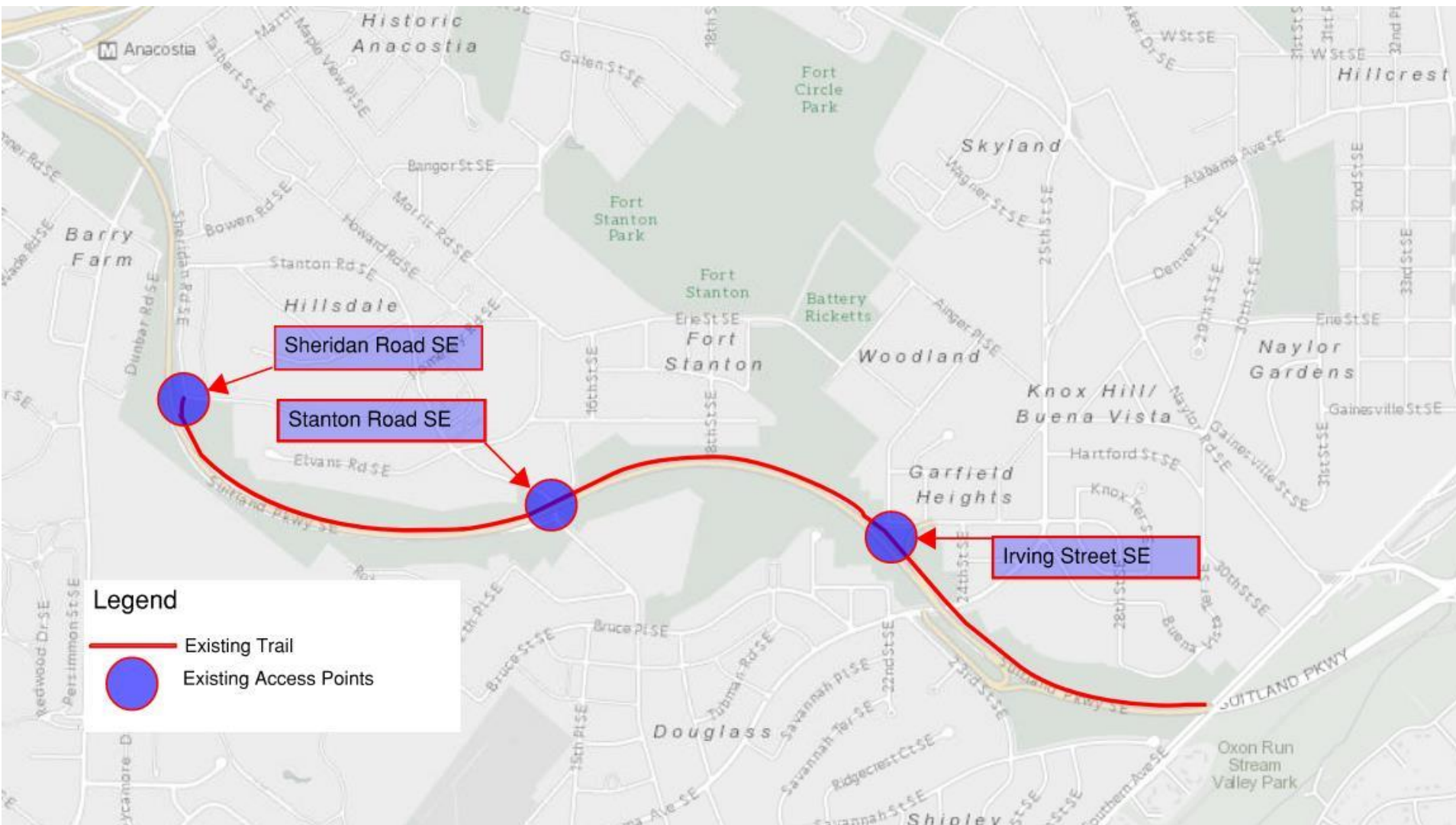
Trail Design Consideration: Existing Features & Utilities



Suitland Trail with guardrail



Current Trail Access Points



Trail Signage, Amenities, and Other Opportunities



Suitland Trail Existing Signage



MBT Example Signage

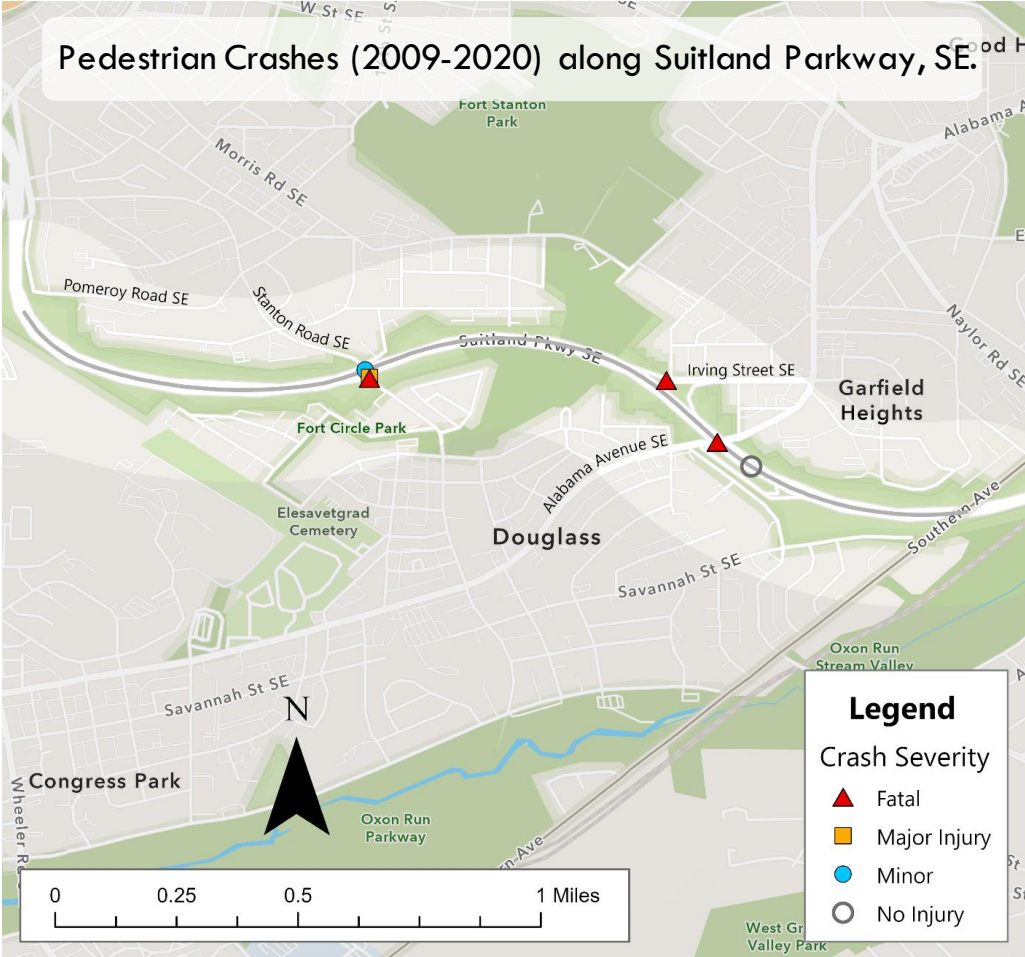
Wayfinding Signage and
Emergency Response Markers

Trail Amenities

Coordination with NPS/DOEE
Stickfoot Branch Stream
Restoration Project

Stormwater Management / LID
Opportunities

Safety – Speeding, Lighting, Crossings



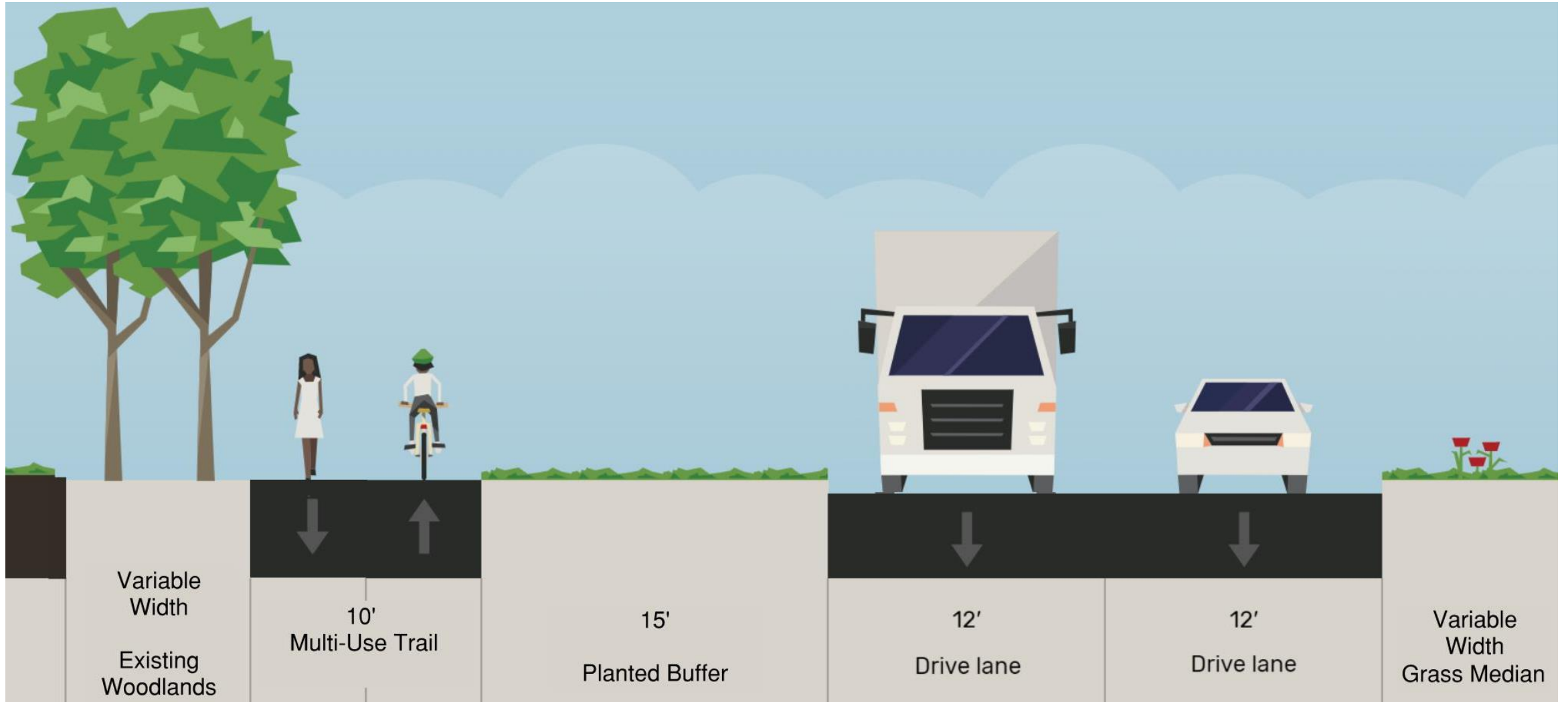
Source: DDOT, November 2022, prepared by VHB, January 2023



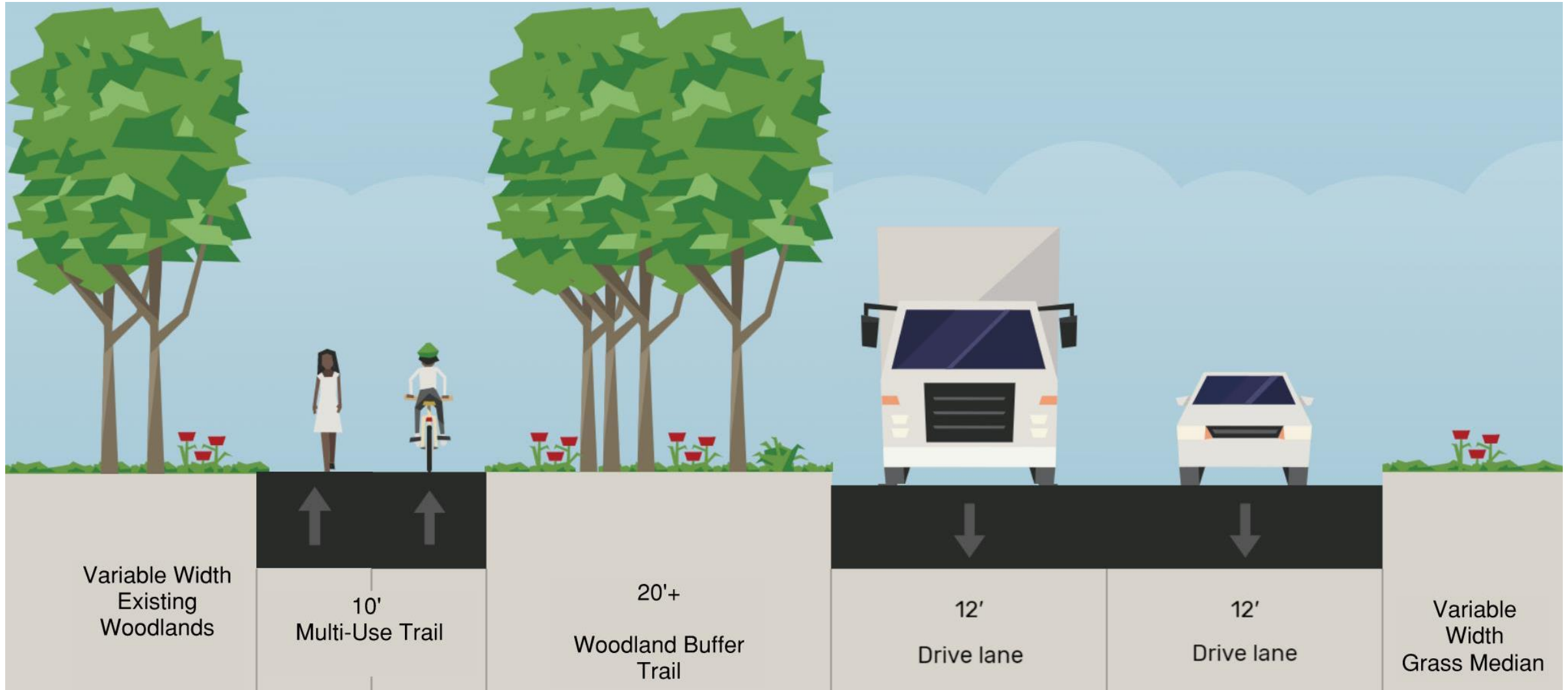
Potential Trail Upgrades



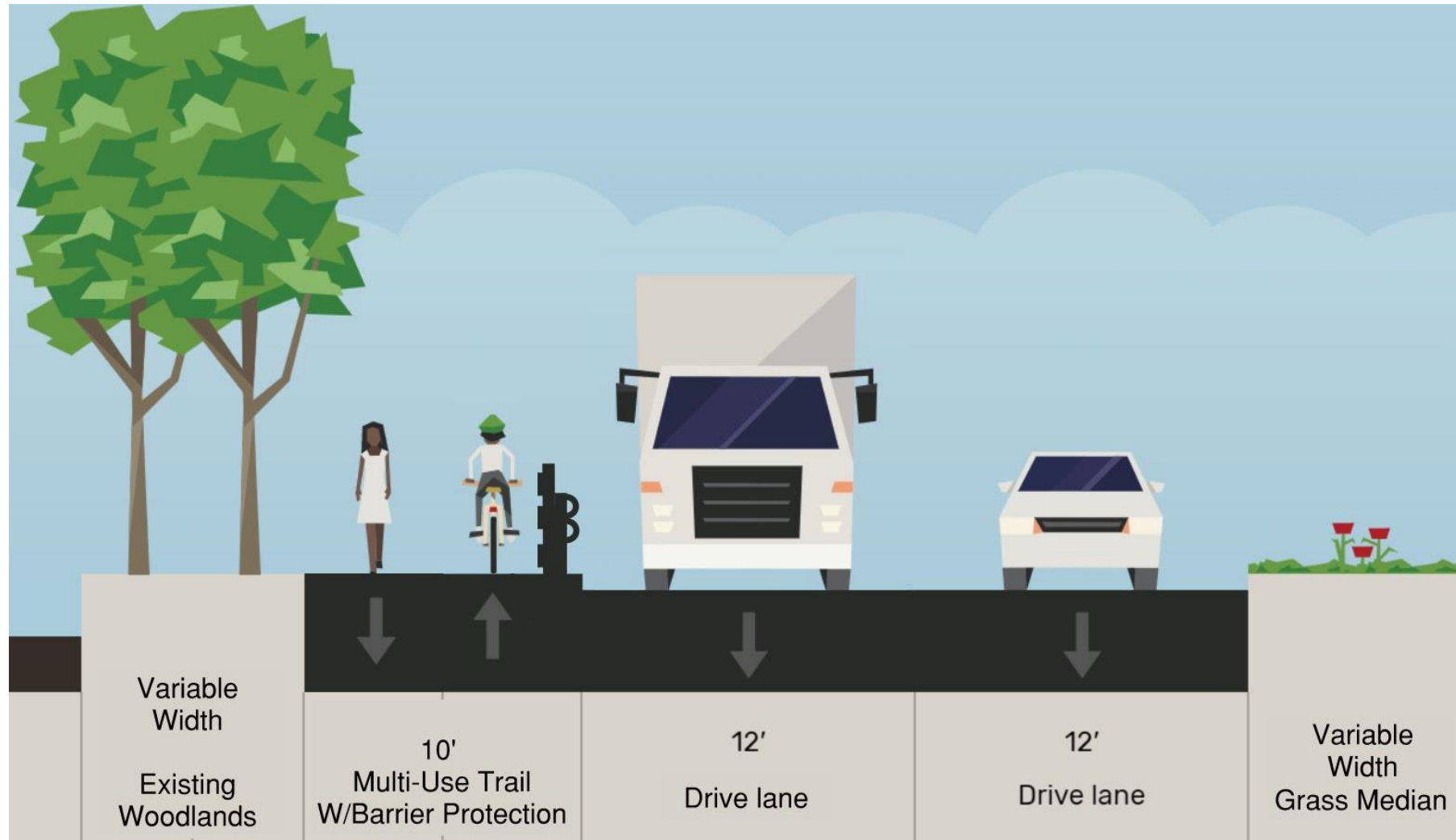
Study of New Offset Trail Alignment with 15' Minimum Buffer



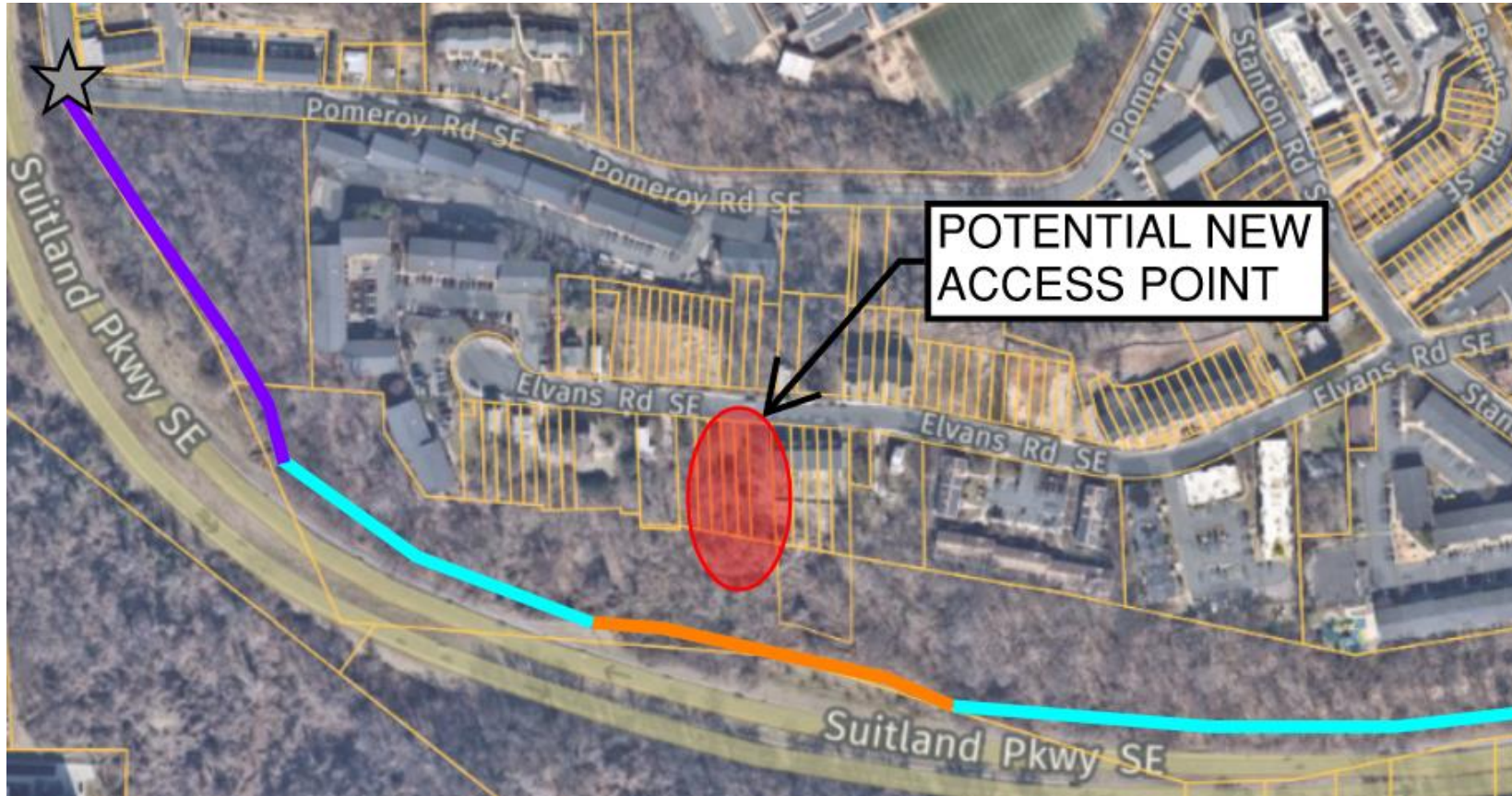
Study of New “Cross Country” Trail



Study of New Protective Barrier along Trail











Potential Trail Design Option: Study Segment 1

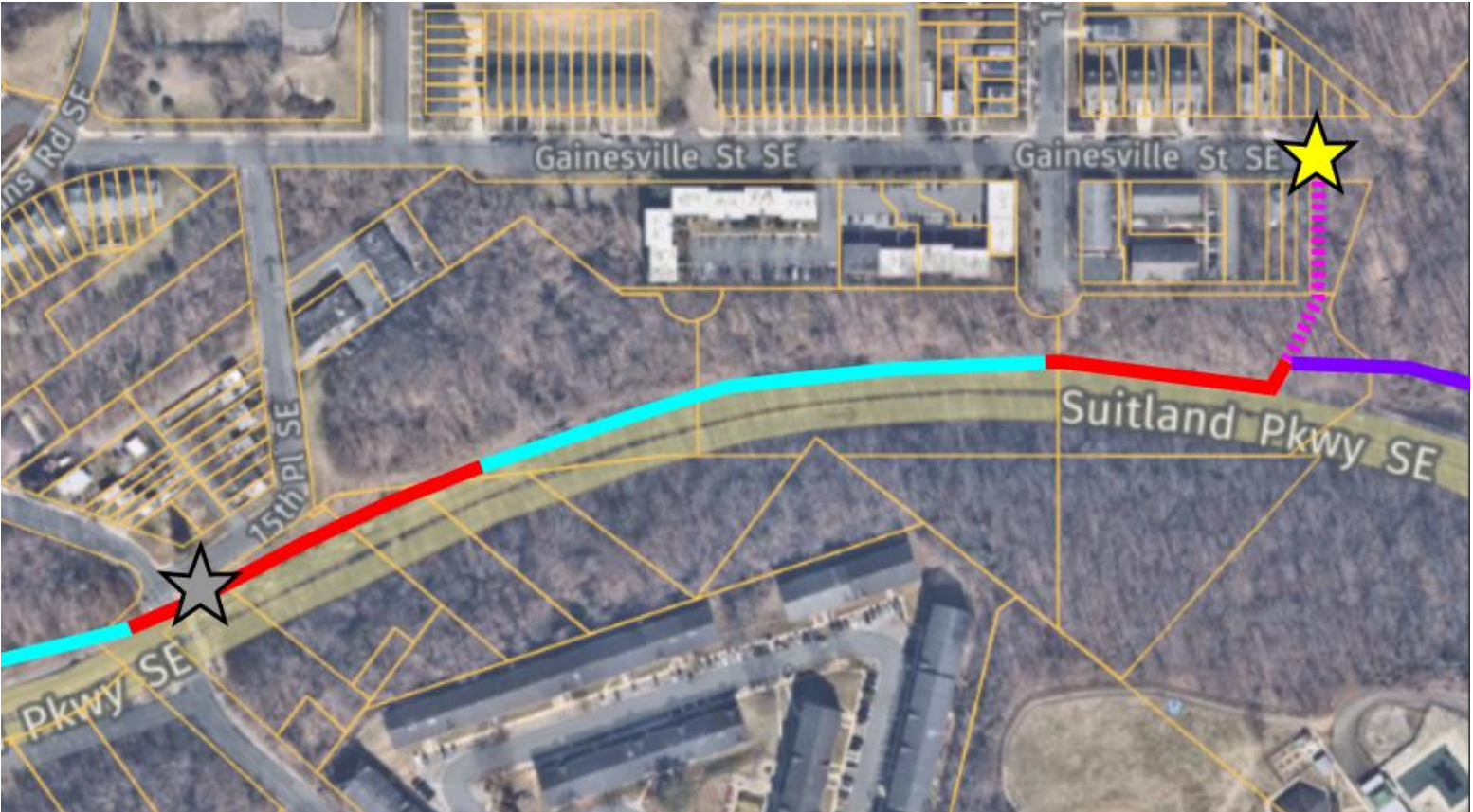


Colorized graphic of possible trail relocations or connections

LEGEND

-  STUDY OF EXISTING SUITLAND TRAIL TO BE RECONSTRUCTED
-  STUDY OF NEW OFFSET TRAIL ALIGNMENT WITH 15' MINIMUM BUFFER
-  STUDY OF MODIFICATIONS TO EXISTING TRAIL (INCLUDING NEW PROTECTIVE BARRIER)
-  STUDY OF NEW CROSS COUNTRY TRAIL LOCATION
-  STUDY OF POSSIBLE NEW TRAIL CONNECTION LOCATION
-  EXISTING SUITLAND TRAIL UNDER ALABAMA AVE BRIDGE
-  STUDY OF POSSIBLE NEIGHBORHOOD TRAIL CONNECTION
-  EXISTING NEIGHBORHOOD TRAIL CONNECTION

Potential Trail Design Option: Study Segment 2



LEGEND

- STUDY OF EXISTING SUITLAND TRAIL TO BE RECONSTRUCTED
- STUDY OF NEW OFFSET TRAIL ALIGNMENT WITH 15' MINIMUM BUFFER
- STUDY OF MODIFICATIONS TO EXISTING TRAIL (INCLUDING NEW PROTECTIVE BARRIER)
- STUDY OF NEW CROSS COUNTRY TRAIL LOCATION
- STUDY OF POSSIBLE NEW TRAIL CONNECTION LOCATION
- EXISTING SUITLAND TRAIL UNDER ALABAMA AVE BRIDGE
- STUDY OF POSSIBLE NEIGHBORHOOD TRAIL CONNECTION
- EXISTING NEIGHBORHOOD TRAIL CONNECTION

Colorized graphic of possible trail relocations or connections

Potential Trail Design Option: Study Segment 3

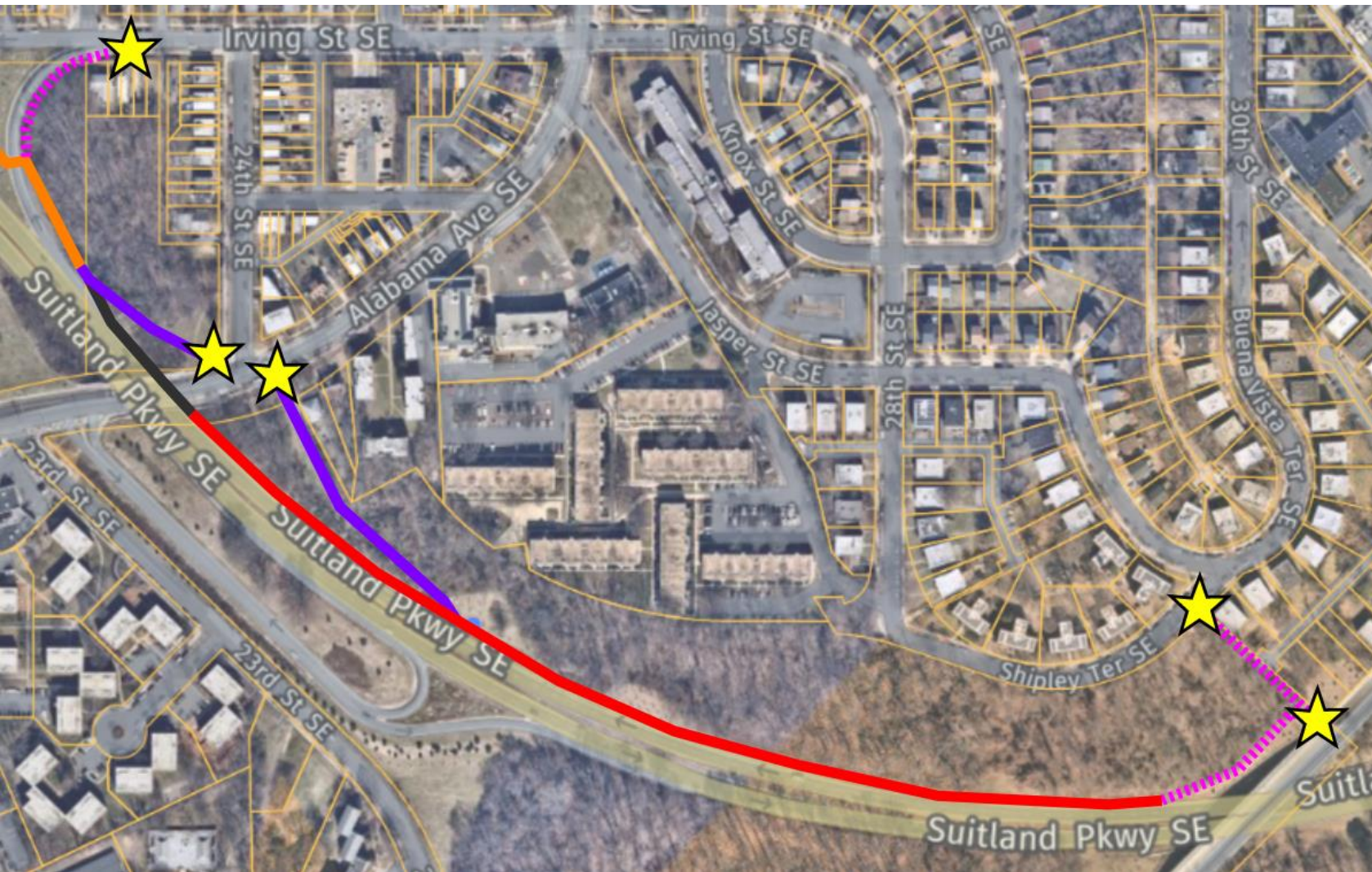


LEGEND

- STUDY OF EXISTING SUITLAND TRAIL TO BE RECONSTRUCTED
- STUDY OF NEW OFFSET TRAIL ALIGNMENT WITH 15' MINIMUM BUFFER
- STUDY OF MODIFICATIONS TO EXISTING TRAIL (INCLUDING NEW PROTECTIVE BARRIER)
- STUDY OF NEW CROSS COUNTRY TRAIL LOCATION
- - - STUDY OF POSSIBLE NEW TRAIL CONNECTION LOCATION
- EXISTING SUITLAND TRAIL UNDER ALABAMA AVE BRIDGE
- ★ STUDY OF POSSIBLE NEIGHBORHOOD TRAIL CONNECTION
- ★ EXISTING NEIGHBORHOOD TRAIL CONNECTION

Colorized graphic of possible trail relocations or connections

Potential Trail Design Option: Study Segment 4



LEGEND

- STUDY OF EXISTING SUITLAND TRAIL TO BE RECONSTRUCTED
- STUDY OF NEW OFFSET TRAIL ALIGNMENT WITH 15' MINIMUM BUFFER
- STUDY OF MODIFICATIONS TO EXISTING TRAIL (INCLUDING NEW PROTECTIVE BARRIER)
- STUDY OF NEW CROSS COUNTRY TRAIL LOCATION
- - - STUDY OF POSSIBLE NEW TRAIL CONNECTION LOCATION
- EXISTING SUITLAND TRAIL UNDER ALABAMA AVE BRIDGE
- ★ STUDY OF POSSIBLE NEIGHBORHOOD TRAIL CONNECTION
- ★ EXISTING NEIGHBORHOOD TRAIL CONNECTION

Colorized graphic of possible trail relocations or connections

How would you use
an improved Suitland
Parkway Trail?



Schedule – Concept Engineering

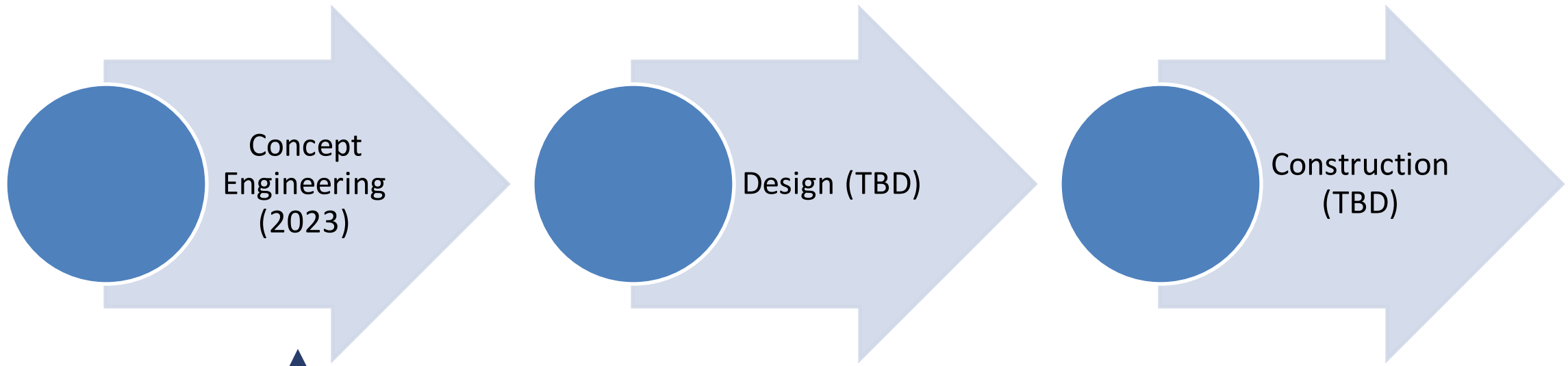


Next Steps

- Agency Coordination
 - National Park Service
 - Dept of Energy and Environment
 - DC Historic Preservation Office
 - National Capital Planning Commission
 - Utilities
 - And others
- Develop draft concepts
- Environmental Review
- Additional Public Involvement



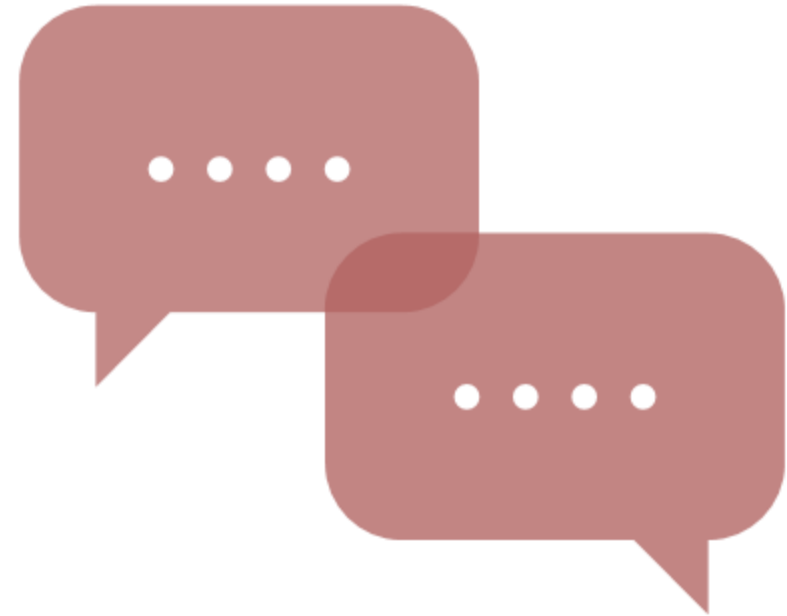
Concept Engineering through Design and Construction



We are here

We look forward to your feedback!

- Title VI Forms
- Invite us to your meeting!
- Take our survey: <https://bit.ly/3IfUaaj>
 - Survey is open until March 15, 2023
- Email: michael.alvino@dc.gov



Project Website: <https://trails.ddot.dc.gov/pages/trail-projects>



District Department of Transportation

250 M St SE | Washington, DC 20003 | 202.673.6813